

The Return of the Dead?

The COVID-19 Business Support Programs in Japan

By

Takeo Hoshi (The University of Tokyo)
Daiji Kawaguchi (The University of Tokyo)
Kenichi Ueda (The University of Tokyo)

April 2021

CREPE DISCUSSION PAPER NO. 100



CENTER FOR RESEARCH AND EDUCATION FOR POLICY EVALUATION (CREPE)

THE UNIVERSITY OF TOKYO

<http://www.crepe.e.u-tokyo.ac.jp/>

The Return of the Dead? The COVID-19 Business Support Programs in Japan¹

Takeo Hoshi (University of Tokyo)
Daiji Kawaguchi (University of Tokyo)
Kenichi Ueda (University of Tokyo)

April 2021

ABSTRACT

We designed and conducted a firm-level survey on the use of COVID-19-related government programs, in collaboration with Tokyo Shoko Research, LTD (TSR). Combining the survey results with the financial statements of the respondent firms, we investigated the factors behind the allocation of various government programs. We find that firms that had low credit scores before the COVID-19 pandemic were more likely to apply for and receive the subsidies and concessional loans offered by the Japanese government in 2020.

¹ We thank Tasuku Sato and Saisawat Samutpradit for their excellent research assistance, Tokyo Shoko Research, LTD (TSR), for the implementation of the web survey, Satoshi Takahashi for answering our inquiries regarding the concessional loan programs. We also appreciate comments that we received from Midori Ookawa and Kei Takahashi. All remaining errors are our own. We acknowledge the grant from Japan Science and Technology Agency (JPMJRX18H3).

1. Introduction

The COVID-19 pandemic has not only been a health shock but also an economic shock of unprecedented magnitude. The shock was largely unexpected and forced many governments to put together emergency responses, which included pandemic containment measures and economic policies. An important economic policy has been the provision of various supports for businesses. In many countries, business firms received subsidies, public guarantees on their loans, loans with subsidized rates and/or lenient conditions, tax breaks and other assistances so that they can tide over the COVID-19 shock without laying off many workers. For example, the central government of Japan allocated at least 3 percent of GDP for concessional loan programs to ease the liquidity problems of firms, and the amount of COVID-19-related loans made by financial institutions is estimated to be about 10 percent of GDP.

Those policy measures aim to prevent the failure of viable firms and the loss of productive employment relations. If the COVID-19 shock were just a temporary macroeconomic shock, the short-lived policies to support existing businesses would make sense as everything would go back to normal and the temporary disruption of economic restructuring would not be very costly. If the shock turns out to be persistent, however, the liquidity problem for many firms turn into a solvency problem. The government would then face an unattractive tradeoff: Continuing the support programs creates the zombie problem that stifles long-run growth, however, phasing out the support abruptly risks the cliff-edge of business failures. The problem becomes even more serious if the shock is not only a macroeconomic shock but also a reallocation shock that requires economic restructuring beyond mere financial reorganization, as suggested by Barrero et al. (2020), Bloom et al. (2020), and Davis et al. (2020). Supporting the incumbent firms with no longer profitable businesses also leads to the zombie problem. Not only do unproductive firms remain, but also productive firms are discouraged to grow due to congestion caused by zombie firms in product, capital, and labor markets. The concessional loan programs become especially problematic because the added loans create debt overhang that slows down necessary restructuring and new investment.

Policymakers and journalists alike warn that the current massive business support program in developed countries might cause “zombification” of post COVID-19 economies.² Yet, we do not

² Media coverage on “zombification” includes “Germany’s bail-out brings worries about its long-term effects,” *The Economist*, September 19, 2020, “Will Japan see a new generation of zombie firms?,” *The Economist*, September 26, 2020, “What to do about zombie firms,” *The Economist*, September 26, 2020, “European Zombification becomes even scarier,” *Financial Times*, December 3, 2020, “Zombies Could Stunt the Bank Recovery,” *The Wall Street Journal*, January 12, 2021, and “Zombie Companies Feed Off the Living,” *The Japan Times*, December 8, 2020.

know how the business support programs are directed and which firms are taking up the programs, due to the lack of data regarding program recipients. In particular, it is largely unknown whether those support programs have been used mainly for zombie firms, which were struggling even before the pandemic.

To better understand the situation, Tokyo Shoko Research, LTD. (TSR), a major Japanese credit rating agency, and the Center for Research and Education on Policy Evaluation (CREPE) at the University of Tokyo, jointly designed and conducted a firm-level survey on the impacts of COVID-19 shocks, as well as on the applications and receipts of various business support programs. Specifically, we look at three grants and subsidy programs for businesses,³ two tax special treatments,⁴ COVID-19 related concessional loans programs by two government banks,⁵ private sector banks, and other (normal) lending by government banks and private sector banks.

We combine the survey results with the corporate financial data provided by TSR. Our sample includes not only large-listed firms but also small unlisted businesses. Based on the original survey, we examine how the funds from various COVID-19-related measures were allocated across firms. In other words, for each type of program, we clarify the characteristics of the firms that are more likely to receive the support from the government.

We pay special attention to the pre-COVID-19 credit worthiness of the firms that receive these public supports. A challenge in our empirical analysis is the fact that the negative shock due to the pandemic may be correlated with the credit worthiness of the firm before COVID-19. The systematic correlation between the shock and credit worthiness before COVID-19 may entail a spurious correlation between the pre-COVID-19 credit worthiness and the likelihood to apply for the support programs. To avoid this potential problem, we control for the year-on-year sales growth in every month, firm size, and industry- and prefecture-fixed effects.

Across the various support programs, including subsidies, grants, and concessional loans, we consistently find that a firm with a lower credit score is more likely to receive the support, conditional on the magnitude of the COVID-19 shock (approximated by the year-on-year sales growth), the firm size, the industry, and the prefecture where the firm is located. We check the robustness of all the results by changing the functional form of the regression, the measurement of the financial health, or the selection of the (sub-)sample.

In particular, we find that the subsidies and grants flow more to the firms that were judged to

³ They are the Business Continuity Grant, the Office Rent Grant, and the special terms for Employment adjustment subsidy.

⁴ Essentially, one is the corporate tax moratorium and the other is the property tax reduction.

⁵ The two government banks are Japan Finance Corporation (JFC) and Shoko Chukin Bank.

have a low credit score before the pandemic. A firm having a credit score one standard deviation below the mean is 7.7% more likely to receive the business continuation grant. We also find that firms with low credit scores are more likely to receive the concessional loans. For example, the firm with a credit score one standard deviation below the average is 28.1% more likely to receive a concessional loan from the Japan Finance Corporation (JFC).

Moreover, the negative correlation between the pre-pandemic credit score and the receipt of loans or the loan amount are substantially stronger for concessional loans from private sector banks, which come with government guarantees, than for standard loans from those banks. For example, our analysis reveals that a firm with one standard deviation lower credit score borrows about 0.42 log points more concessional loan from private sector banks, but about 0.12 log points more standard loan from those banks. The result is consistent with the hypothesis that the government guarantee makes banks' lending standards more lenient because the banks would not suffer from potential defaults. A back of the envelope calculation shows that about 20% of the total borrowing amount of the concessional loans were taken up by those that TSR labeled as "the firms that creditors should exercise caution with."

In summary, our key finding is that the non-negligible fraction of the support measures ended up helping the firms that were distressed even before the outbreak of the COVID-19 pandemic. This finding suggests that the current policy to combat the seemingly temporary pandemic shock may sustain zombie firms and make potentially profitable firms face debt overhang even after the pandemic is contained. Thus, policymakers need to carefully design the process of unwinding the support measures to avoid the risk of making the temporary shock into a permanent brake on the economy and exacerbating the zombie problem in Japan. The process of unwinding has to deal with restructuring or exits of firms that were already unviable before the crisis.

The rest of the paper is organized as follows. Section 2 reviews the literature in economics related to our inquiry. Section 3 reviews various public support programs for businesses introduced in Japan during the COVID-19 crisis. Section 4 describes the data that we use for the analysis. Section 5 reports the main results on the characteristics of the firms that receive various supports from the government. Section 6 examines the robustness of the results using alternative measurement of firm solvency and the analysis sample. Section 7 concludes by pointing out some directions for future research.

2. Related Literature

The paper adds to the literature on potential "zombification" of post-COVID-19 economies, which is growing in both academic research and journalistic discussion. The zombie firms are the firms

that are in permanent distress but stay in business without going through serious restructuring, thanks to assistance provided by their creditors and/or governments. The concept of zombie firms was originally developed to understand the economic stagnation in Japan in the late 1990s. The Japanese banks were found to extend credit more often to seemingly non-viable corporations, as Peek and Rosengren (2005) found. The obvious cost of zombie firms is that productive resources (capital and/or human resources) are put into less productive uses. As Caballero et al. (2008) showed, congestion created by zombie firms reduces the profitability of non-zombies and potential entrants, thus, it harms the process of creative destruction and economic growth.

The zombie problem in Japan is likely to be a factor that explains the “negative exit effect” puzzle. The exit effect in the productivity decomposition à la Foster et al. (2001) refers to the improvement of the aggregate productivity resulting from exits of firms that had productivities lower than the industry average. For Japan, the researchers consistently find such an exit effect to be negative overall, implying that many exiting firms have productivities *higher* than the industry average or equivalently the firms with very low productivities often continue to stay in the market. The papers that find the negative exit effects include Fukao, Kim, and Kwon (2006), which use establishment-level data and Nishimura, Nakajima, and Kiyota (2005), which use firm-level data.

In the mid-2000s, as large Japanese banks were finally forced to get rid of non-performing loans, many large zombie firms appeared to have disappeared or been restructured, as Fukuda and Nakamura (2011) argued. However, the zombie problem may still haunt the Japanese economy. Ueda and Dovchinsuren (2020) report that the disparity of marginal product capital across firms has been increasing steadily. The problem is especially serious for small and medium-size enterprises (SMEs). Ikeuchi et al. (2018) find a negative exit effect using extensive data on SMEs. Recent research by Miyakawa (2021) finds that a large part of the negative exit effect may be explained by the acquisition of relatively well performing SMEs by large companies, but even after controlling for such effect, he still finds the remaining exit effect to be negative.

After the global financial crisis and the sovereign debt crisis that followed in Europe, the zombie problem attracted attention in many European countries. The IMF (2013) examined the pros and cons of various credit support policies adopted by many advanced countries. McGowan et al. (2018) studied firm-level data from several OECD countries and found that the proportion of zombie firms rose in many countries after the global financial crisis. Moreover, they found that zombie congestion tends to reduce the productivity growth, especially for young firms. Acharya et al. (2020) examine panel data for over a million firms from 12 European countries and find that zombie firms depress not only productivity growth but also many other variables related to corporate performance, including markups and product prices, and may generate deflation.

More generally, the paper relates to the growing literature on the policies toward the businesses hurt by the COVID-19 crisis. Gourinchas et al. (2020) estimate a large increase in the failure rate of small and medium-size enterprises (SMEs) if no government support is provided. They also show that it is possible to support the vulnerable firms selectively to avoid a sudden increase in the failure rate without much fiscal cost. Brunnermeier and Krishnamurthy (2020) examine how the support policy should take into account somewhat different types of problems faced by different firms. For example, they point out that liquidity provision is desirable for many SMEs facing severe liquidity constraints while making restructuring through bankruptcy process easier is better for large firms with solvency problems. The Group of Thirty (2020) points out that the main problem has already shifted from liquidity to solvency and argues:

“The problem is worse than it appears on the surface, as massive liquidity support, and the confusion caused by the unprecedented nature of this crisis, are masking the full extent of the problem, with a “cliff edge” of insolvencies coming in many sectors and jurisdictions as support programs lose funding and existing net worth is eaten up by losses.”

Group of Thirty, 2020, pp.1

There are a few studies on the impacts of business support programs in various countries. Granja et al. (2020) study the allocation and impacts of the Paycheck Protection Program (PPP) for SMEs in the US, which provided loans to troubled SMEs through private sector lenders approved by the US Small Business Administration (SBA). They find that the loans were not well targeted and flowed to regions not relatively affected that much. They also find that many SMEs used loan proceeds to pay for expenses other than payrolls and/or saved it. The impact on employment, the stated goal of the program, is found to be very small. Chetty et al. (2020) also examined the employment impact of the PPP and make a similar finding: it took \$377,000 to save a job at a small business. For very small businesses, Bartlett and Morse (2020) find that the PPP improved their (subjective) prospect for survival of more than six months, even if the COVID-19 disruption continues.

Core and De Marco (2020) examine the expansion of the government loan guarantee program in Italy. They find that the guaranteed loans were made more quickly by large banks with better information technology (IT) systems to the firms with existing lending relations. Hancké et al. (2020) look at programs in Germany and the UK aimed at helping businesses and find that the results of the apparently similar programs were very different. The UK policy was not effective in preventing layoffs while, apparently, the same policy protected employment in Germany.

For programs in Japan, Morikawa (2020) finds that firms that received the government supports were more likely to exhibit low productivity, measured by labor productivity and TFP, before the COVID-19 crisis. For public loan guarantee programs before the pandemic, Ono and

Yasuda (2017) find a similar moral hazard problem.

3. Support Programs in Japan During the COVID-19 Crisis

The Japanese government has introduced numerous policies to help firms combat their financial difficulties due to the COVID-19 pandemic. They can be classified into four major categories: grants and subsidies, special tax treatments, concessional loans, and administrative guidance and free consultations. Some of those programs introduced a new set of special terms for the existing program. For example, the employment adjustment subsidy increases the replacement rate of the wage subsidy, which explicitly aims at maintaining employment by supporting firms. We focus on several key programs in our regression analysis below. This section provides a brief overview of all public support programs designed to help corporations to survive the pandemic.

3.1. Grants and Subsidies

At least 15 grants and subsidies were introduced in 2020. These can be grouped into three types. First, there are some grants (*kyufukin*) aimed at providing immediate help for SMEs experiencing acute sales losses. These grants include the Business Continuity Grant (*jizokuka kyufukin*) and the Office Rent Grant (*yachin shien kyufukin*) and are administered by the central government (the Small and Medium Enterprise Agency). In 2020, the central government allocated funds for those grants in two sets of supplementary budget bills, one passed by the Parliament in April and the other in June.⁶ In total, about 4 trillion yen was allocated to the Business Continuity Grant and about 2 trillion yen to the Office Rent Grant. The sum is about 1 percent of GDP, which is about 540 trillion yen in 2020.⁷

The Business Continuity Grant is a one-time grant of 2 million yen for a SME or 1 million yen for a sole proprietor. The eligibility criteria are (a) the recipient's monthly sales dropped more than 50% compared to the same month in the last year; and (b) the recipient established their business during or before 2019 and are willing to continue their business.

The Office Rent Grant is a one-time grant to partially reimburse rents up to 1 million yen per month for six months for a SME or up to 0.5 million yen per month for six months for a sole proprietor. The eligibility criteria are (a) the recipient's monthly sales dropped more than 50% compared to the

⁶ Note that because our survey was conducted in late 2020, sample firms are not affected by another supplementary budget bill that passed Parliament in January 2021 in the same 2020 fiscal year (i.e., April 2020 to March 2021).

⁷ Budget numbers follows Unami (2021), supplemented by the webpage information of the Ministry of Finance (https://www.mof.go.jp/budget/budger_workflow/budget/fy2020/fy2020.html#3hosei), the Ministry of Economics, Trade, and Industry (https://www.meti.go.jp/main/yosan/yosan_fy2020/index.html), and Japan Finance Corporation (https://www.jfc.go.jp/n/finance/search/covid_19_m.html).

same month in the last year; or (b) the recipient's three-month sales dropped more than 30% compared to the same three months in the last year.

Second, several subsidies (*hojokin*) are designed to incentivize SMEs to make forward-looking fixed investments, such as installing digital equipment to allow remote working, renovating office and shop spaces to ensure social distance, and so forth. These are provided mainly through two government sponsored institutions, the Organization for Small and Medium Enterprises and Regional Innovation and the Japan External Trade Organization. Major ones are subsidies under the Programs to Promote Productivity Revolution (*seisansei kakumei suisin jigyo*).⁸ These subsidies existed before the pandemic but were expanded to help firms adjust their businesses to respond to the pandemic.

Third, several subsidies (*joseikin*) are enhanced to maintain employment as much as possible. A major one is the Employment Adjustment Subsidy, which existed before the pandemic but was expanded substantially during the pandemic. The Ministry of Labour, Health, and Welfare directly administers this subsidy. The central government allocated about 0.5 trillion yen for this subsidy in total in two supplementary budgets.

It covers a firm's cost of paying furloughed workers or providing off-the-job training (Off-JT). If the firm is a SME and not laying off any workers, the subsidy pays 100% of the furlough payment or the wages for the workers who received the Off-JT (3/4 if it is a large firm). If the SME is laying off some workers, the subsidy pays 4/5 of the furlough cost or wages for workers in the Off-JT (2/3 if a large firm). These special terms are more generous than pre-COVID-19 ones, which covered 2/3 of the furlough cost or the wages for workers in the Off-JT (1/2 for large firms), regardless of the layoffs.

The maximum allowance per day, per worker was also increased from 8,370 yen to 15,000 yen. For a case of Off-JT, an additional 2,400 yen per worker, per day is granted to the SME (1,800 yen for large firms). Before the pandemic, the excess allowance for Off-JT was 1,200 yen regardless of the size of the firm. The period of eligibility for a firm to receive the employment adjustment subsidy was also relaxed to 100 days per year and 150 days per three years. The sales loss criteria for the eligibility was changed from 10% average sales drop over three months relative to the same three months last year to 5% monthly sales drop relative to the same month last year.

Other employment related subsidies (*joseikin*) include a direct payment to furloughed workers in case their employers do not pay, and grants to firms if they allow workers to take additional paid leave to take care of their children during school closures.

⁸ One of those subsidies is called the Business Continuity Subsidy (*jozokuka hojokin*), which sounds similar to Business Continuity Grant but is totally different.

In the statistical analysis below, we focus on two grants (the Business Continuity Grant and the Office Rent Grant) and one subsidy (the Employment Adjustment Subsidy), since these are the major grants and subsidies aimed at helping firms that suffered from the COVID-19 pandemic.

3.2. Special Tax Treatments

In March 2020, the government announced the one-year grace period for any tax payments (e.g., corporate income tax, consumption tax, etc.) for firms that experienced drops in their monthly operating incomes by more than 20% compared to the same month last year (Corporate Tax Moratorium).⁹ The one-year grace period also applies to sole proprietors who experience financial difficulties caused by the pandemic.

A tax refund, by carrying back this year's loss from the previous year's corporate income tax, are generously allowed. It had always been generous for firms with capital that do not exceed 100 million yen, but it is now allowed for all firms with capital of less than 1 billion yen. Moreover, corporations are allowed to deduct a wide range of COVID-19-related expenses and losses, including purchases of surgical masks and disinfectants and losses from unused raw foods at affected restaurants.

Property tax reduction on buildings, machineries, and equipment were also introduced in March 2020. The property tax on buildings, machineries, and equipment that a firm already owns was reduced to zero percent, if the firm's three-month sales dropped by more than 50% compared to the same months last year. The tax is reduced to a half if the sales drop was less than 50% but more than 30%. Even before the pandemic, lower property tax rates, which differ among prefectures, applied for newly purchased machinery and equipment for three years. In March 2020, the reduced property tax rates were extended to newly purchased business-related buildings.

3.3. Concessional Loans

Regarding special concessional loans related to COVID-19, at least 25 programs were introduced by the end of 2020. These can be grouped into two types: programs for loans originated by government financial institutions and those for loans originated by private sector banks. The major government financial institutions that provide the special concessional loans are the Japan Finance Corporation (JFC) and the Shoko Chukin Bank.¹⁰ The government financial institutions provide

⁹ This program lasted only one year. The application period to this program was ended as of February 1, 2021, except for some special circumstances (e.g., the owner-manager is hospitalized).

¹⁰ While the Japan Finance Corporation is wholly owned by the central government, about half of the Shoko Chukin Bank is owned by the central government. The rest of the Shoko Chukin Bank is owned by Small Business Associations and their member SMEs. Other government financial institutions that provide the special concessional loans include the Okinawa Development Finance Corporation, which is owned wholly by the central government

preferential loans for SMEs even in the normal periods, but the special concessional loans are more generous than the usual preferential loans.

The key COVID-19-related special loan programs by these two government financial institutions share common terms and conditions. In March 2020, loan rates for the first three years were lowered by 0.9% to 0.21% for SMEs and to 0.46% for other firms. This is widely applied to firms that experienced sales drops of more than 5% compared to the normal sales.¹¹ More damaged firms effectively pay a zero rate as they can receive the interest subsidies with the same amount as the interest payments from the Organization for Small & Medium Enterprises and Regional Innovation. For this, the eligibility is restricted to those who experienced a sales drop of more than 15% for micro enterprises and 20% for SMEs. No collaterals are required for these loans, so these loans are called “effective zero interest loans without collaterals.”

As for the concessional loans through the private sector banks, the main program is a reinforced system of public guarantees for bank loans for SMEs. In Japan, SME bank loan guarantees of 80% of the loan values by the governmental agencies have been widely used. For several years following the Global Financial Crisis, the government enhanced public guarantees to 100% for bank loans. This special scheme had just started to be phased out before the COVID-19 crisis hit. In March 2020, the government reintroduced the special scheme, guaranteeing 100% of SME loan values. The eligible firms are essentially those who faced more than a 15% monthly sales drop compared to the same month of the last year. Also, additional budgets are allocated for 80% guarantee programs for those firms with more than 5% sales drops.

The guarantee fees, which are usually around 1%, are cut to a half or zero. The SME bank loan guarantees are provided by the Credit Guarantee Associations, sponsored by prefectural governments (and a few city governments) in each jurisdiction but insured by the Japan Finance Corporation (and, hence, eventually by taxpayers). Terms and conditions vary slightly across prefectures.

After May 1, the government expanded the program of “effective zero interest loans without collaterals” to private sector banks. In many prefectures, the interest subsidies are paid directly to private sector banks from the Organization for Small & Medium Enterprises and Regional Innovation. The maximum interest rate that banks can charge varies across prefectures but is set at around 1.5%.

and targets firms in the Okinawa prefecture.

¹¹ Normal sales refers to the same month sales in any of the past three years. In the case of firms established between three and 13 months ago, the normal sales refers to either (a) the average sales in the previous three months; (b) the December sales in 2019; or the average sales from October to December, 2019 (https://www.jfc.go.jp/n/finance/search/covid_19_m.html).

To use this program, the firms need to use the guarantees specified above, hence, they need to meet the same eligibility criteria.

Overall, the central government allocated about 15 trillion yen, or about 3 percent of GDP, for concessional loan programs to ease the liquidity problems of firms in total in two supplementary budgets. These budget numbers include the interest payments and loan guarantee fees, but do not include the loan principals advanced by government financial institutions. The amount of COVID-19-related loans made by those financial institutions is estimated to be at least 50 trillion yen, or about 10 percent of GDP.

3.4. Administrative Guidance and Free Consultations

Consultations regarding corporate management, including financial management, digitalization, and human resource management, are provided free by government agencies or government sponsored enterprises. Some of the subsidies, especially those that come with debt forgiveness, require the recipients to go through such consultations.

Several sets of administrative guidance were issued to large firms and government agencies requiring them not to discriminate against and rather to give favorable treatments to SMEs and sole proprietors. Also, the government agency keeps a closed eye on these issues by occasionally surveying SMEs and proprietors. Similarly, regarding labor standards, the government agencies closely monitor firm compliance.

4. Data

The primary dataset used in this study is the firm-level credit report compiled by Tokyo Shoko Research (TSR), which is a major credit rating agency in Japan and is the Japanese counterpart of Dun and Bradstreet's worldwide network. The data set is widely used by researchers on Japanese firms, for example, Bernard et al. (2019) and Carvalho et al. (2020). The data set aims to cover all firms in Japan regardless of their size, industry, and region. It includes information on the year of establishment, the head quarter location, the industry defined by the major product or service, the amount of sales, the number of employees, profit, and information regarding the CEO.

To this data set, we add the results of the original firm survey on the effects of the COVID-19 pandemic that the Center for Research and Education in Program Evaluation (CREPE) at the University of Tokyo designed and conducted jointly with TSR. TSR and CREPE invited the TSR email magazine subscribers to participate in the survey between October 26th and November 6th, 2020 (the questionnaire is shown in Appendix A). Among the 5,695 firms who responded to the survey, 4,093

firms are matched to the observations in the data set. Matching the information as of December 2019 is crucial so as to learn the firms' financial conditions before the pandemic.

To better understand the characteristics of the firms that responded to the special survey, we compare the characteristics based on the firms' information as of December 2019, extracted from the TSR database. We find that firms with higher credit scores, higher profits per employee, more employees, and that are not SMEs are more likely to have responded to the survey, as reported in Table B1 and Figure B1 of Appendix B. In terms of industry, the manufacturing and wholesale and retail sectors are overrepresented, whereas construction, real estate and lease, hotel and restaurant, and health and welfare sectors are underrepresented. We have to keep in mind that there are some potential biases introduced by the sample selection. Our sample has somewhat more larger firms with better performance compared with the entire database. Moreover, the industries that are considered to have suffered especially during the pandemic, such as hotel and restaurant, are underrepresented in our sample.

The survey asks for the growth rate of sales of each month between February and September in 2020, relative to the same month in 2019. We interpret the answer to this question as the demand shock that the firm experienced during the pandemic. The survey also asks whether they applied for any of the various government grants, subsidies, and loan programs. For each program that a firm applied for, the survey asks the month when the application was filed, whether and when it was approved, and the amount received if the application was successful.

As we discussed in the last section, many support programs have an eligibility criteria in terms of the (maximum) sales decline that a firm experienced during the pandemic. Thus, we expect both the applications and the acceptances to depend on sales growth. All of these variables are available in the survey data.

The main inquiry of this study is whether the applications for, and the acceptances into, the support programs are correlated with the pre-pandemic performances of the firms. The key variable to measure the pre-pandemic performance is the credit score assigned to each firm by TSR as of December 2019. The credit score for a firm at a specific time is recorded as an integer between 0 and 100. The credit score is the sum of the sub-scores for four aspects of the firm performance: management quality (0-20 pts), growth judged by sales growth, profit growth, and the product market prospect (0-25 pts), stability judged by the balance sheet strength and relationship with lenders, suppliers and client firms (0-45 pts), and transparency and reputation (0-10 pts).¹² The TSR credit

¹² An explanation of the credit score is found at: http://www.tsr-net.co.jp/guide/knowledge/glossary/ha_05.html (in Japanese only).

scores are known to be positively correlated well with the actual defaults (Miyakawa, Miyauchi, and Perez, 2017 and Miyakawa and Shintani, 2020).

TSR expects the subscribers to their services to utilize the credit score to determine the creditworthiness of corporate customers, especially when they provide trade credits. TSR classifies the firms into five groups according to the credit score and gives a verbal label to each group. The firms with a score less than or equal to 29 are "*keikai* (caution)," those with a score between 30 and 49 are "*ichio keikai* (somewhat caution)," those between 50 and 64 are "*tasho chui* (attention)," those between 65 and 79 "*bunan* (safe)" and those between 80 and 100 are considered to be "*keikai fuyo* (no risk)." In the statistical analyses below, we divide the original value for the TSR credit score by 100, so that the range of the variable becomes [0, 1]. As an alternative measure of pre-pandemic performance, we use the profit per worker, per month. We should note that about 10% of firms do not report the profit, thus, the sample size is reduced when we use this alternative measure of performance.

Table 1 shows descriptive statistics for the sample. The average value of the credit score is 0.543 with standard deviation 0.067. The 1st percentile of the distribution is 0.40 and the 99th percentile is 0.70. The average profit per worker, per month is 109 thousand yen, which is roughly 1 thousand US dollars. The average total sales per worker, per month is 4,410 thousand yen, which is roughly equivalent to 40 thousand US dollars. The average number of employees is 160, whereas the standard deviation is about 3,000, suggesting there are many small firms and a small number of large firms in the sample. The 5th percentile of the employment is 3 and the 95th percentile is 435.

Turning to the year-on-year sales growth during the period between February and September of 2020, the average sales growth was -0.002 in February, hitting bottom at -0.141 in May and recovering to -0.076 in September. The time series pattern for sales growth resembles the mirror image of the time series development for the number of confirmed new cases of COVID-19 infection. The state of emergency covering all the regions of Japan was in force between April 16th and May 14th. The trough of the sales growth in May probably reflects the plummet in peoples' mobility during the state of emergency.

Since the eligibility criteria for several government support and loan programs include conditions on the minimum sales growth during the past months, we calculate the minimum for the year-on-year sales growth from February to September and use this for statistical analysis in the next section. The average for minimum sales growth is -0.305 with a standard deviation of 0.302. This implies that the respondents' experiences are widely heterogeneous. The survey also asks for the sales prospect for 2021 relative to 2019. The average for this answer is -0.078, which is very much similar to the average sales growth in September 2020. Thus, the average firm seems to expect the economic condition in the fall of 2020 to continue into 2021 with no improvement.

The survey asks several questions about firms' applications to the government support programs, as well as loans by government financial institutions for SMEs (Japan Financial Corporation and Shoko Chukin Bank) and private sector bank loans with the governments' subsidy on interest and the 100% public guarantee. For each program applied for, a respondent firm is asked to provide the month of application, the month of approval (if approved), and the amount received (or will receive).

Table 1 shows that about a quarter of firms applied for the special terms of the Employment Adjustment Subsidy, as well as the Business Continuation Grant, whereas about 10% applied for the Office Rent Grant. Only about 4% applied for the Corporate Tax Moratorium and only about 1% applied for the Property Tax Reduction. The low numbers for the tax moratorium application may be due to the tax deadline being two months after each firm's accounting year-end, which may come after our survey. About 16% of respondent firms applied for the special loans from Japan Financial Corporation (JFC). About 6% applied for the special loans offered by Shoko Chukin and about 25% applied for the special loans from private sector banks. The receipt rate of the program is close to the application rates for most of the programs.

The bottom part of Table 1 reports the descriptive statistics for the amounts received from the government support programs and the amounts borrowed from the financial institutions. The average amount received as the Employment Adjustment Subsidy is about 8 million yen, whereas the average of the Business Continuation Grant is 4 million yen, and the average of the Office Rent Subsidy is 3 million yen. The average amount of the special loan is 60 million from JFC, 90 million from Shoko Chukin, and 50 million from private banks. The amount of a standard loan is 70 million from JFC, 80 million from Shoko Chukin, and 130 million from private banks. The amounts of concessional loans are much larger than the amounts of subsidies or grants. The amounts of the special loans are comparable to the amounts of the standard loans in the case of JFC and Shoko Chukin, but the average amount of special loans is about half of the average amount of standard loans in the case of private financial institutions.

To get an idea about how the likelihood of applying for or receiving a government support is correlated with the credit score for 2019, we look at the diagrams exhibited in Figures 1, 2, and 3. To create a diagram, we first divide the range of the 2019 credit score into equal size intervals (bins), and then calculate the proportion of the number of firms that applied for (or received) the government support for each bin. The bin size is set so that there are 20 intervals with equal length. Finally, we plot the application proportion (y-axis) against credit-score bins (x-axis), and add a linear regression line. The results for the government grants (the Employment Adjustment Subsidy, the Business Continuation Grant, and the Office Rent Grant) are reported in Figure 1 and the results for the concessional loans (by Japan Financial Corporation, Shoko Chukin Bank, and private sector banks)

are reported in Figure 2. In each figure, the upper panel shows the application rate and the lower panel shows the approval (receipt) rate. Figure 3 compares the actual loan amounts by lenders and loan types, concessional or standard loans. For this figure, the upper panel reports the results for concessional loans and the lower panel reports the results for standard loans.

Looking at Figure 1, both the application rate and the approval rate for all three government grants and subsidies are negatively correlated with the credit score of 2019. Figure 2 also shows that the application rate and the approval rate for the concessional loan programs are negatively correlated with the credit score in 2019. Figure 3 further show that the 2019 credit score and the loan amount are negatively correlated in general. The negative correlations are much stronger for the concessional loans made by Japan Financial Corporation and the private banks. These figures suggest that the firms with low credit scores are more likely to join the support programs. Correlation, however, does not imply causation. Thus, in the next section, we conduct regression analyses, controlling for the size of the COVID-19 shock to each firm and the heterogeneity of firms in terms of firm size, industry, and the region.

5. Pre-COVID-19 Credit Score and the Application and Receipt of Business Support Programs

5.1. Estimation Strategy

We now characterize the type of firms that tend to apply and receive the support grants and subsidies and concessional loans by conducting regression analysis. The dependent variable is a binary variable that takes the value one if the firm has applied for (or received) the government support. The explanatory variables are the credit score in 2019 and other controls, including sales growth during the pandemic, firm size, sales prospect for 2021, industry fixed effects (either 2-digit or 3-digit level), and prefecture fixed effects. The observation becomes smaller, primarily due to the lack of sales information.

It is crucial to control for the sales growth/decline because the liquidity support policies targeted those firms that experienced significant sales drop. We estimate the following linear regression model.

$$\begin{aligned}
 (\text{Apply or Receive})_{ijk,2000} &= \beta \cdot \text{Credit Score}_{ijk,2019} + f(\text{MinSalesGrowth}_{ijk}) + \gamma \cdot \ln(\text{Sales})_{ijk,2019} + \delta \\
 &\cdot \ln(\text{emp})_{ijk,2019} + \theta \cdot \text{Expcted Sales Growth}_{ijk,2021} + \text{Region}_k + \text{Industry}_j \\
 &+ u_{ijk,2000}, \quad (1)
 \end{aligned}$$

where $\text{Apply}_{ijk,2000}$ indicates if the firm i in industry j in region k applied for the program in 2020,

$Receive_{ijk,2000}$ indicates if the firm i in industry j in region k received the program, $Credit\ Score_{ijk,2019}$ is the credit score of firm i in 2019, $MinSalesGrowth_{ijk}$ is the minimum monthly sales growth between February 2020 and September 2020 relative to the same month in 2019, $ln(Sales)_{ijk,2019}$ is the natural logarithm of the amount of sales in 2019, $ln(emp)_{ijk,2019}$ is the natural logarithm of employment in 2019, $Expcted\ Sales\ Growth_{ijk,2021}$ is the expected sales growth in 2021 relative to 2019, $Region_k$ is 47 prefecture fixed effects, and $Industry_j$ is industry fixed effects. Depending on specification, some terms may be omitted, the industry fixed effects are considered for 2- or 3-digit level, and the function f of $MinSalesGrowth$ is assumed to be linear.

5.2. Estimation Results for the Employment Adjustment Subsidy

Table 2 reports the estimation result for the application to the Employment Adjustment Subsidy. Column 1 shows the estimated coefficients from the simple regression model that includes the credit score as the only explanatory variable. The estimated coefficient is -0.288, which implies that 0.1-point higher credit score reduces the application probability by about 3 percentage point. Recall that a quarter of the sample firms applied for the grant.

Column 2 specification adds firm size variables, expected sales growth in 2021 relative to 2019, and the minimum of year-to-year sales growth between February and September 2020 as explanatory variables. The estimated coefficient on the credit score becomes even more negative, -0.522. The sign of estimated coefficients on the other explanatory variables are sensible. Smaller firms, in terms of sales, are more likely to apply for the subsidy, while larger firms, in terms of the number of employees, are more likely to apply for the subsidy. This may be due to the amount of subsidy being proportional to the total payments to furloughed employees.

Notably, firms expecting higher sales growth in 2021 are less likely to apply for the employment adjustment subsidy. This may be because the firms that expect quick recovery of sales decides to continue keeping their employees on payrolls without furloughing. Finally, the firms that experienced a deep sales drop are more likely to apply for the subsidy. Thus, even taking into account the higher application tendency by firms with poor performance *during the pandemic*, the firms with poor prospect *before the pandemic* were more likely to apply.

Column 3 allows a more flexible functional form on the effect of $MinSalesGrowth$. In order to receive the employment adjustment subsidy, a firm, as a rule, must have suffered at least a 5% sales decrease compared with the same month in the previous year. Similarly, in order to receive the business continuation grant, a firm must have suffered at least a 50% year-on-year sales drop. Thus, we may expect a discontinuity of the function f at $MinSalesGrowth = -5\%$ and -50% . However, other programs have different thresholds. To allow for a flexible functional form, we create bin dummy

variables corresponding to $[-1, -0.90]$, $(-0.90, -0.80]$, ..., $(-0.10, 0.00]$, $(0.00, 0.10)$, ..., $(-0.90, 1.00)$, $(1.00, \text{maximum}]$, and include the set of bin dummy variables in the regression. In this specification, the estimated coefficient for the credit score is attenuated, but still larger, at -0.417 , than the estimate in the simple regression model and statistically significant.

Column 4 adds 47-prefecture fixed effects to the Column 3 specification. Since cases of COVID-19 are concentrated around urban areas, allowing for regional heterogeneity is potentially important. The estimated coefficient on the credit score continues to be negative and statistically significant. The estimate is larger, at -0.476 , than the one in Column 3, in absolute value. The significant change in the estimated coefficients suggests that there is substantial regional heterogeneity. Looking at estimated coefficients on prefectural dummies (not reported in the table), we find that firms located in urban areas are more likely to apply for the Employment Adjustment Subsidy. Since there is also a systematic difference in average credit scores across prefectures, a regression without prefectural dummies can result in biased estimates.

Finally, Columns 5 and 6 specifications add 2-digit and 3-digit industry fixed effects, respectively. The inclusion of the industry fixed effects reduces the estimated negative impact of the credit score on the likelihood of applying for the special term of the Employment Adjustment Subsidy. Thus, at least a part of the correlation between a low credit score and the high likelihood of applying for the grant is at industry level: an industry with more low-credit-score firms are more likely to have larger number of firms applying for the grant. As reported by Kikuchi, Kitao, and Mikoshiba (2020), the impacts of COVID-19 vary greatly across industries. Thus, it is not surprising that a part of the correlation we find comes from between-industry variation. Even with industry dummies, however, the coefficient estimate on the credit score is negative. Whether we use 2-digit industry fixed effects or 3-digit industry effects seems to make little difference, -0.289 and -0.279 respectively, although it is statistically significant only at 10% level with 3-digit industry effects.

5.3. Key Estimation Results for Various Programs

Below, we report the regression results for various government support programs, using the specification with prefecture fixed effects and 2-digit industry fixed effects (Column 5 specification). Thus, we focus on the within-industry variation of credit scores as of 2019 and examine the correlation between credit score and participation in the programs.¹³

¹³ Although we do not discuss it here, the government also introduced industry-specific subsidies, namely the Go-To Hojokin, a subsidy for the travel industry and restaurants, 1.7 trillion yen in total in two supplementary budgets. Tokyo prefecture was initially not included for this subsidy, due to a more severe pandemic situation. Apparently, prefecture fixed effects and industry fixed effects should be effective to control this potential omitted variable bias.

Table 3 tabulates the estimated regression coefficients on the credit score for different dependent variables. The other regressors in this table are the same as in Column 5 of Table 2, namely, $\ln(\text{Sales of 2019})$, $\ln(\text{Employment of 2019})$, Sales prospect of 2021 relative to 2019, bin dummy variables for the range of the minimum of the year-over-year sales growth between February and September 2020, prefecture fixed effects, and 2-digit industry fixed effects. The full regression results, with the exception of dummies and fixed effects, are reported in Appendices C and D.

To give an idea about the magnitude of these estimates, we consider the impact of a 0.1-point increase in the credit score on the application for, and approval by, each program. Because the sample average of the credit score is 0.543, with the standard deviation of 0.067, we essentially consider what happens when the credit score improves by 1.5 times the standard deviation.

The first row of Panel A in Table 3 reports the regression of the application to the various government grants and subsidies. The first row of Column 1 (application to the special terms of the Employment Adjustment Subsidy) just repeats the estimated coefficient reported in Column 5 of Table 2. The estimated coefficient is statistically significant at a 5% level. The 0.1-point increase of the credit score decreases the application probability by about 3 percentage points. This is a sizable impact, as the sample application rate is 26%, about a quarter.

For the Business Continuity Grant, the 0.1-point increase in the credit score decreases the application rate by about 3 percentage points. This is again sizable, as the sample application rate is 24%. For the Office Rent Grant, the 0.1-point increase in the credit score reduces the application rate by about 2 percentage points. This is relatively large, compared to the sample application rate of 10%. These estimates are statistically significant at a 5% level.

Similarly, we find that firms with a 0.1 higher credit scores are less likely to file for the Corporate Tax Moratorium and the Property Tax Reduction, about 4% and 1%, respectively. They are statistically significant at a 5% level for the former and at a 10% level for the latter.

The second row of Table 3 reports the estimated coefficients for the credit score on the probability of receiving the business support programs. The column for the Corporate Tax Moratorium and the Property Tax Reduction is empty since the survey did not ask if the tax moratorium/reduction had been accepted. Tax moratorium/reduction applications are accepted as long as they are properly prepared.

The estimated coefficients indicate that firms with a higher credit score are less likely to receive them, but the estimated coefficient is statistically significant only for the receipt of the Business Continuity Grant. The estimate implies that firms with a 0.1 lower credit score are 2.5 percentage

points more likely to receive the Business Continuity Grant. It is a large effect considering a bit more than 20% of sample firms receive this grant. In other words, a firm with a one standard deviation higher credit score is 7.7 % more likely to receive the Grant.¹⁴ Overall, we find that firms with lower credit scores are more likely to apply for the government grants and subsidies, although the correlation becomes weaker when we look at actual recipient numbers .

We now turn to the regression results for the concessional loan applications, receipts, and the borrowing amount which are reported in Panel B of Table 3. For the applications to loans (special or standard) from JFC, Shoko Chukin, and private sector banks, the coefficient estimates on the pre-COVID-19 credit score are all negative and statistically significant at a 1% level. Thus, similar to the grants and subsidies, firms with low credit scores are more likely to apply for those loans. Moreover, the association is stronger for the concessional loans than for the standard loans from any sources.

For concessional loan programs by private sector banks, a firm with a 0.1-point decline in their credit score is about 10 percentage points more likely to apply. This is quite a large effect since about a quarter of the firms applied to these loans. In contrast, for standard loans from private sector banks, firms with a 0.1-point lower credit score are about 3 percentage points less likely to apply but it seems quite sizable considering only an 8% application rate.

The second row of Panel B of Table 3 shows the results for loan approvals. Here, we find that the firms with low credit scores are more likely to receive these loans. All the estimates are significant at at least a 5% significance level. Specifically, a firm with a 0.1 lower credit score is about 6 percentage points more likely to receive the JFC concessional loan for which the sample receipt rate is merely 14%. In other words, a firm with a one standard deviation higher credit score is 28.1% more likely to receive the concessional loans from JFC.¹⁵ The case for Shoko Chukin is a bit weaker with about half of the tendency for the JFC. The degree of the negative selection on the credit score is most severe in the special loan programs offered by the private sector banks, as is the case with application. A firm with a 0.1 lower credit score is about 8 percentage points more likely to receive those loans.

The third row of Panel B of Table 3 reports the regression results for the loan amount from banks, unconditional on application or receipt of the loans. In this unconditional analysis, those firms that do not borrow through a specific loan program are assigned zero values, whether or not they applied for the loan program. The dependent variable is the natural log of 1 plus the loan amount measured in 10 thousand yen. Adding 10 thousand yen to the loan amount is negligible in comparison to the average loan amount conditional on the receipt of loans. For example, Table 1 shows that the

¹⁴ The standard deviation of the credit score is 0.067, the estimated coefficient is -0.247, and the mean receipt rate is 0.215. Thus, $0.067 * -0.247 / 0.215 = -0.077$.

¹⁵ The standard deviation of the credit score is 0.067, the estimated coefficient is -0.583, and the mean receipt rate is 0.139. Thus, $0.067 * -0.583 / 0.139 = -0.281$.

average concessional loan amount from JFC is about 60 million yen.

The first column shows the estimation result for the concessional loan program of JFC. A firm with a 0.1 lower credit score borrows about 0.5 log points more. The partial correlation between the credit score and the standard loan amount of JFC is smaller: a 0.1 lower credit score decreases the loan amount by about 0.15 log points. The third and fourth columns show the similar tendency for the loans made by Shoko Chukin with roughly a half effect for special loans, as well as standard ones. Overall, the results suggest that the two government lenders were more lenient on the concessional loans than the standard loans.

For private banks, the result for concessional loans is very different from that for standard loans. The fifth column of Panel B of Table 3 shows that a firm with a 0.1 lower credit score borrows about 0.6 log points more concessional loan. In contrast, the corresponding number for standard loan is 0.2 log points. In other words, a firm with a one standard deviation lower credit score borrows 0.42 log points more of the JFC concessional loan and 0.12 log points more of the JFC standard loan. Similar to the results obtained for the two government lenders, we find that the firms with lower credit scores before COVID-19 borrow larger amount and this tendency is much stronger for concessional loans than for standard loans.

The results, heretofore, show that the firms with lower credit scores are more likely to apply for and receive the concessional loans through both government and private banks. To quantify the degree at which financially unhealthy firms received the concessional loans, we calculate the total amount of the concessional loans made to the firms with credit scores below 0.5, that is, the firms TSR call for caution to give trade credits to its service subscribers. Table 4 tabulates the number of cases and the amount of loans given to such firms. Among all the concessional loans, 19% went to the firms with credit scores below 0.5. In terms of the loan amount, 18% of the total concessional loans went to such firms.

5.4. Discussions on Estimation Results

To understand these estimation results, we need to examine potential mechanisms on why firms with more questionable viability before the pandemic ended up being more likely to receive the government supports. Here, we point out four possibilities that we can easily come determine and how promising each hypothesis is.

First, a support program may have helped zombie firms, explicitly by design. That would be , for example, a case where the terms of a concessional loan (such as interest rates) are set favorably for the firms that were struggling before the COVID-19 pandemic. Glancing at the conditions for receiving

the subsidies and the concessional loans, this possibility seems to be remote. We do not find any condition that would disproportionately favor the firms that did poorly *before* the pandemic. Almost all the conditions are about sales decline and other troubles that the firms encountered *after* the onset of the pandemic.

An exception is the special loans extended by private sector banks. As we discussed above, the special loans come with 100% guarantees by local Credit Guarantee Associations, which are eventually backed by taxpayers' money. Before the pandemic, the guarantee covered 80% of the loan amount. Thus, banks were able to recover only 80% of the loan value in the event of bankruptcy. In other words, banks shared 20% of the loss. This must have prevented banks from taking too much credit risk. With an 100% guarantee, however, banks bear no cost from potential defaults. Hence, banks barely have incentives to differentiate viable firms from non-viable firms. This may lead private sector banks to provide the special loans to those firms that they would not lend to if the loans were only partially guaranteed. If this were the case, it would not be surprising to find that poorly performing companies, even before the pandemic, are more likely to apply for and receive the loans from private sector banks.

Second, even if a program does not explicitly favor poorly performing firms, it may have conditions that discourage applications by firms with good performance. This may apply for the concessional loans either by public or private institutions. For example, the firms that did well before the pandemic may enter the pandemic with better financial conditions and less debts than poorly performing firms. Less indebted firms are less likely to gamble for resurrection by increasing leverage. Thus, the well performing firms may be less likely to apply for loans.

This second possibility does not seem to apply for the grants and subsidies that we look at, or special tax treatments. All these supports are unexpected gifts from the government to any firms that met the eligibility criteria, regardless of their credit scores before the pandemic.

Third, grants, such as the Business Continuity Grant or the Office Rent Grant, were lump-sum transfers whose amounts do not depend on firm size. For such programs, large firms with billion-yen sales, which tend to have a high credit score, may not bother to apply. On the other hand, the support amount of the Employment Adjustment Subsidy is defined per worker and, therefore, the total amount is proportional to the number of employees. Thus, given a fixed cost of paperwork for program application, larger firms have a stronger incentive to apply. This contrasting support-program designs seems to explain why the negative correlation of the credit score and the probability of receipt was stronger for the Business Continuity Grants than for the Employment Adjustment Subsidy.

Finally, there may be a reputational concern, similar to the one observed during the global

financial crisis. Some banks were hesitant to accept any government bailout because they worried that accepting a bailout may signal a weakness of their balance sheets (Landier and Ueda, 2009 and Philippon and Skreta, 2012). Similarly, healthy firms may have decided not to apply for the subsidies or special loans out of concerns that applying would lead their banks, suppliers, and customers to suspect a weakness of their balance sheets.

6. Robustness Check

This section reports two types of robustness check. First, we tried an alternative measure of the firms' credit worthiness other than the credit score. Second, we restricted the sample to the small and medium-enterprises (SMEs) defined in the SME Act of Japan.

6.1 Profit per Worker as an Alternative Measure of Creditworthiness

The analysis in the previous section used the TSR credit score as the measure for creditworthiness. Miyakawa et. al. (2017) and Miyakawa and Shintani (2020) report that the TSR credit score is a good predictor of firm exit, both bankruptcy and voluntary closure.¹⁶ While we do not doubt the quality of TSR score as a creditworthiness measure, we would like to examine the robustness of our results using the monthly profit per worker figure as an alternative measure of the firms' creditworthiness before the outbreak of the pandemic.

We estimated the same set of models as those in Table 3 by replacing the TSR credit score by the monthly profit per worker. The results are reported in Table 5. The signs and statistical significance of the estimated coefficients are largely invariant to the change of the explanatory variable. The size of the estimated coefficient on the creditworthiness variable (i.e., profit per worker) substantially shrinks, but this merely reflects the fact that the level and the variance of monthly profit per worker is much larger than those of the credit score. Importantly, the firms with lower profitability are more likely to receive the government subsidy or grants. Those firms are also more likely to receive concessional loans from JFC, Shoko Chukin, and private banks. Moreover, all the coefficients are now statistically significant at least at the 10% level, except for the standard loan receipt from the JFC.

Overall, the analysis using the monthly profit per worker shows very similar results as above, that is, firms with lower profitability are more likely to take up the business support programs and concessional loans. Thus, our results are robust when we use an alternative measure of pre-pandemic performance of firms.

¹⁶ Both studies show that there is room for improvement through exploiting rich balance sheet information, combined with the variable selection technique, based on machine learning algorithm.

6.2 Subsample Analysis Limited to SMEs

The sample in the previous section included all the respondent firms that we can find the necessary accounting data for to allow analysis, regardless of firm size. While most of the government support programs are open to all firms, many favor SMEs. For example, the maximum replacement rate of the employment adjustment subsidy for furloughed workers is 100% for SMEs, whereas it is 75% for larger firms. In the case of concessional loans by the two government banks, loan rates were 0.21% for SMEs and 0.46% for other firms for the first three years, although both types of firms can receive subsidies to reduce the interest payments to effectively zero if they satisfy a certain set of conditions.

This differential treatment of SMEs may explain the negative relationship that we find between the credit score and the receipt of the support program. SMEs, with lower credit scores on average, may be more likely to apply and receive the supports than large firms, since the programs are designed to be more attractive to SMEs. To address this potential problem, we repeat the analysis using only SMEs as the regression sample.

The Small Business Act (*Chusho Kigyo Ho*) of Japan defines an SME by the number of employees and the stated amount of capital where the thresholds vary by industry.¹⁷ Using the industry code, the number of employees, and the stated amount of capital in the TSR data base, we identify 3,867 SMEs out of 4,199 firms in our sample.

Table 6 reports the results of essentially the same regressions for Table 3 but are based on the restricted sample of the 3,867 SMEs. The coefficient estimates are almost identical to those in Table 3. Thus, the Table 3 results are not driven by a policy tendency to target SMEs.

7. Conclusion and Future Research

In examining the characteristics of the firms that applied for and received various subsidies and concessional loans that the Japanese government provided during the COVID-19 pandemic, we have found that the firms with poor performance (suggested by low credit scores) before the pandemic are more likely to receive those government supports. Within the analysis sample, about 20% of the total amount of concessional loans were lent to firms with credit scores in the “somewhat cautious” range (between 0.30 and 0.49). Thus, the government support programs seem to have protected at least

¹⁷ To be classified as an SME, a firm has to be smaller than a certain threshold defined in terms of either the amount of capital or the number of employees. For the wholesale industry, the capital threshold is 100 million yen and the employee threshold is 300 employees. For the service industry, the thresholds are 50 million yen and 100 employees. For the retail industry, the thresholds are 50 million yen and 50 employees. For other industries, the thresholds are 300 million yen and 300 employees.

some firms that had been zombies even before the pandemic. In the wake of the pandemic, swift supply of liquidity to the healthy but liquidity-constrained firms was necessary to prevent them from failing, and for that, a coarse screening might have been inevitable. However, policymakers need to realize the unintended consequence of the generous liquidity provision that partially saves the zombie firms: Such a policy eventually transforms the temporary shock due to COVID-19 into the permanent shock by distorting the liquidity supply to the inefficient firms.

To complete the policy discussion, the cost of business support programs should be discussed on the balance of the benefit of the program; how much the program prevented the dismissal of workers or business closure due to the liquidity constraint. In such assessments, one also has to consider the general equilibrium impacts of the government support programs. They may change the future behavior of the firms and the economy's vulnerability to future shocks. For example, expectation for government grants could prompt the firms to hold less cash, make inflexible wage and/or employment commitments, and consider well-prepared business continuation plan, insurances for major disasters or even make bank credit lines unnecessary. One should also note that the social benefit of protecting businesses and/or employment is not entirely obvious. Business turnovers and job destructions are important parts of the dynamics that keep the economy growing. Claessens and Ueda (2020) builds a theoretical model that shows that preventing business closures and worker dismissal are socially desirable only when such a policy is not too generous and is the only way to maintain relation-specific capital and firm-specific skill. We leave a comprehensive evaluation of the government support programs for future research.

References

- Acharya, Viral V., Matteo Crosignani, Tim Eisert, and Christian Eufinger (2020), “Zombie Credit and (Dis-)Inflation: Evidence from Europe,” *NBER Working Paper*, 27158.
- Barrero, Jose Maria, Nicholas Bloom, and Steven J. Davis (2020), “COVID-19 is also a Reallocation Shock,” *NBER Working Paper*, 27137.
- Bartlett III, Robert P. and Adair Morse (2020), “Small Business Survival Capabilities and Policy Effectiveness: Evidence from Oakland,” *NBER Working Paper*, 27629.
- Bernard, Andrew B., Andreas Moxnes, and Yukiko U. Saito (2019), “Production Networks, Geography, and Firm Performance,” *Journal of Political Economy* 127(2), pp. 639–88.
- Bloom, Nicholas, Robert S. Fletcher, and Ethan Yeh (2020), “The Impact of COVID-19 on US Firms,” *NBER Working Paper*, 28314.
- Brunnermeier, Markus, and Arvind Krishnamurthy (2020), “Corporate Debt Overhang and Credit Policy,” *Brookings Papers on Economic Activity*, forthcoming.
- Caballero, Ricardo J., Takeo Hoshi, and Anil K Kashyap (2008), “Zombie Lending and Depressed Restructuring in Japan,” *American Economic Review* 98(5), pp. 1943–77.
- Carvalho, Vasco M., Makoto Nirei, Yukiko Saito, and Alireza Tahbaz-Salehi (2020), “Supply Chain Disruptions: Evidence from the Great East Japan Earthquake,” *Quarterly Journal of Economics*, 136(2), pp. 1255–1321.
- Che, Yeon-Koo, Chongwoo Choe, and Keeyoung Rhee (2020), “Bailout Stigma,” *mimeo*, Columbia University.
- Chetty, Raj, John Friedman, Nathaniel Hendren, and Michael Stepner (2020), “The Economic Impacts of COVID-19: Evidence from a New Public Database Built Using Private Sector Data,” *NBER Working Paper*, 27431.
- Claessens, Stijn, and Kenichi Ueda (2020), “Basic Employment Protection, Bargaining Power, and Economic Outcomes,” *Journal of Law, Finance, and Accounting*, 5(2), pp.179–229.

- Core, Fabrizio, and Filippo De Marco (2020), “Public Guarantees for Small Businesses in Italy During COVID-19,” Available at SSRN: <https://ssrn.com/abstract=3604114> (accessed on February 7, 2021).
- Davis, Steven J., Stephen Hansen, and Cristhian Seminario-Amez (2020), “Firm-Level Stock Price Reactions to Pandemic News,” *NBER Working Paper*, 27867.
- Foster, Lucia, John C. Haltiwanger, and C. J. Krizan (2001), “Aggregate Productivity Growth: Lessons from Microeconomic Evidence,” in Charles R. Hulten, Edwin R. Dean, and Michael J. Harper (Eds.) *New Developments in Productivity Analysis*. pp. 303–72 (Chicago, IL: University of Chicago Press).
- Fukao, Kyoji, YoungGak Kim, and Hyeog Ug Kwon (2006), “Plant Turnover and TFP Dynamics in Japanese Manufacturing,” *Hitotsubashi University CEI Working Paper*, No. 2006-17.
- Fukuda, Shin-ichi, and Jun-ichi Nakamura (2011), “Why Did ‘Zombie’ Firms Recover in Japan?” *The World Economy*, 34(7), pp. 1124–37.
- Gourinchas, Pierre-Olivier, Şebnem Kalemli-Özcan, Veronika Penciakova, and Nick Sander (2020), “COVID-19 and SME Failures,” *NBER Working Paper*, 27877.
- Granja, João, Christos Makridis, Constantine Yannelis, and Eric Zwick (2020), “Did the Paycheck Protection Program Hit the Target?” *NBER Working Paper*, 27095.
- Group of Thirty (2020), *Reviving and Restructuring the Corporate Sector Post-COVID*. (Washington, DC: Group of Thirty).
- Hancké, Bob, Toon Van Overbeke and Dustin Voss (2020), “The Revenge of Varieties of Capitalism,” *manuscript*, London School of Economics, <https://www.dropbox.com/s/sdf0eicbr0zdn4x/VOC%20and%20Covid-19.pdf?dl=0> (accessed on January 26, 2021).
- Harada, Kimie, Takeo Hoshi, Masami Imai, Satoshi Koibuchi, and Ayako Yasuda (2015), “Japan’s Financial Regulatory Responses to the Global Financial Crisis,” *Journal of Financial Economic Policy*, 7(1), pp. 51–67.
- Hoshi, Takeo and Anil K Kashyap (2010), “Will the U.S. Bank Recapitalization Succeed? Eight Lessons from Japan,” *Journal of Financial Economics*, 97, pp. 398–417.

- Igan, Deniz, Prachi Mishra, and Thierry Tressel (2012), “A Fistful of Dollars: Lobbying and the Financial Crisis,” *NBER Macroeconomics Annual*, 26(1), Chapter 4, pp. 195–230.
- Ikeuchi, Kenta, YoungGak Kim, Hyeog Ug Kwon, and Kyoji Fukao (2018), “Chusho Kigyo ni okeru Seisansei Dogaku (Productivity Dynamics at Small and Medium Enterprises),” *Keizai Kenkyu*, 69(4), pp. 363–77.
- International Monetary Fund (2013), “Assessing Policies to Revive Credit Markets,” *Global Financial Stability Report*, October, Chapter 2, pp.63–104.
- Landier, Augustin, and Kenichi Ueda (2009), “The Economics of Bank Restructuring: Understanding the Options,” *IMF Staff Position Note 09/12*, reprinted (2014) as Chapter 16 in *Financial Crisis: Causes, Consequences, and Policy Responses*, Claessens et al. (eds), (Washington, DC: The International Monetary Fund,).
- McGowan, Müge A., Dan Andrews, and Valentine Millot (2018), “The Walking Dead?: Zombie Firms and Productivity Performance in OECD Countries”, *Economic Policy*, 33, pp. 685–736.
- Miyakawa, Daisuke (2021), "Performance of Exiting SMEs in Japan: An Empirical Analysis using Exit Mode Data," *mimeo*.
- Miyakawa, Daisuke, Miyauchi Yuhei, and Christian Perez (2017), “Forecasting Firm Performance with Machine Learning: Evidence from Japanese Firm-Level Data,” *RIETI Policy Discussion Paper Series*, 17-E-068.
- Miyakawa, Daisuke and Kohei Shintani (2020), “Disagreement between Human and Machine Predictions”, *Bank of Japan IMES Discussion Paper*, 2020-E-11.
- Morikawa, Masayuki (2020), “Corona Kiki Taisaku Riyō Kigyō no Seisansei” (Productivities of the Firms that Use the Corona Crisis Assistance Measures), *RIETI Policy Discussion Paper*, 20-P-031.
- Nishimura, Kiyohiko G., Takanobu Nakajima, and Kozo Kiyota (2005). “Does the Natural Selection Mechanism Still Work in Severe Recessions?: Examination of the Japanese Economy in the 1990s,” *Journal of Economic Behavior and Organization*, 58(1), pp. 53–78.

- Ono, Arito, and Yukihiro Yasuda (2017), “Forgiveness Versus Financing: The Determinants and Impact of SME Debt Forbearance in Japan,” *RIETI Policy Discussion Paper*, 17-E-086.
- Peek, Joe, and Erik S. Rosengren (2005), “Unnatural Selection: Perverse Incentives and the Misallocation of Credit in Japan,” *American Economic Review*, 95(4), pp. 1144–66.
- Philippon, Thomas, and Vasiliki Skreta (2012), "Optimal Interventions in Markets with Adverse Selection." *American Economic Review*, 102(1), pp. 1–28.
- Ueda, Kenichi, and Khaliun Dovchinsuren (2020), “Allocative Efficiency of Capital Across Japanese Firms,” *Public Policy Review*, 16(7), pp.1–22.
- Unami, Hiroataka (2021), “Reiwa 3 Nendo Yosan no Point to Tomen no Zaisei Unei,” (Brief Overview of FY2021 Budget and Current Fiscal Stance), *Koken*, No 690, pp. 50–73 (in Japanese).

Table 1: Descriptive Statistics

	Mean	SD
Baseline Characteristics as of December 2019		
Credit Score (Bad 0.0 – Good 1.0)	0.543	0.067
Profit / Worker and Month (1,000 JPY)	109	234
Sales / Worker and Month (1,000 JPY)	4,410	5,859
Sales (Million JPY)	5,383	15,331
Number of Employees	160	2,919
Experienced Shocks and Prospect		
Year-to-year Sales Growth of 2020 Relative to 2019		
February	-0.002	0.288
March	-0.021	0.307
April	-0.099	0.342
May	-0.141	0.345
June	-0.090	0.332
July	-0.090	0.316
August	-0.087	0.314
September	-0.076	0.306
Minimum of Sales Growth, February to September 2020	-0.305	0.302
Prospective Sales of 2021 Relative to 2019	-0.078	0.213
Business Support Programs or Leans		
	Application	Receipt
Special Terms of Employment Adjustment Subsidy	0.259	0.218
Business Continuity Grant	0.246	0.215
Office Rent Grant	0.102	0.065
Corporate Tax Moratorium	0.038	-
Property Tax Reduction	0.014	-
Concessional Loan by Japan Financial Cooperation	0.158	0.139
Standard Loan by Japan Financial Cooperation	0.038	0.030
Concessional Loan by Shoko Chukin	0.056	0.044
Standard Loan by Shoko Chukin	0.018	0.011
Concessional by Private Banks	0.254	0.229
Standard Loan by Private Banks	0.083	0.069
Receipt of Amount from Bailout Programs in 10,000 Yen		
	Mean	SD
Special Terms of Employment Adjustment Subsidy N=920	778	2,196
Business Continuity Grant N=906	399	1,106
Office Rent Grant N=281	251	267

Borrowing Amount in 10,000 Yen	Mean	SD
Special Loan by Japan Financial Cooperation N=595	5,893	6,467
Standard Loan by Japan Financial Cooperation N=131	6,700	8,604
Special Loan by Shoko Chukin N=194	9,322	9,021
Standard Loan by Shoko Chukin N=51	8,116	7,481
Special Loan by Private Banks N=971	5,029	5,380
Standard Loan by Private Banks N=292	13,477	18,713

Note: The number of observations is 4,201, except for profit where the number of observations is 3,856. Profit and sales related variables are winsorised at 1 and 99 percentiles. Application to the program and approval by the program are the indicator variables. The receipt variable is defined unconditional on application. The deadline for the application for tax or property tax holiday was April 16, 2020, which was in the early stage of the pandemic. The receipt amount of the bailout programs and the borrowing amount from banks are conditional on receipt.

Source: TSR-CREPE web survey, conducted between October 26 and November 6 of 2020.

Table 2: Determinants of Application for the Special Terms of the Employment Adjustment Subsidy

	(1)	(2)	(3)	(4)	(5)	(6)
Credit Score	-0.288*** (0.101)	-0.522*** (0.126)	-0.417*** (0.124)	-0.476*** (0.128)	-0.289** (0.130)	-0.279** (0.133)
Ln (Sales of 2019)		-0.012* (0.007)	-0.013* (0.007)	-0.013* (0.007)	-0.017** (0.009)	-0.023** (0.009)
Ln (Employment of 2019)		0.062*** (0.008)	0.065*** (0.008)	0.064*** (0.008)	0.053*** (0.010)	0.057*** (0.010)
Sales Prospect of 2021 Relative to 2019		-0.152*** (0.034)	-0.147*** (0.034)	-0.150*** (0.034)	-0.120*** (0.033)	-0.099*** (0.034)
Min (YoY Sales Growth, Feb-Sep 2020)		-0.282*** (0.025)				
<i>N</i>	4,201	4,201	4,201	4,201	4,199	4,151
Bin Dummy Variables of Min (Sales)	No	No	Yes	Yes	Yes	Yes
Prefecture	No	No	No	Yes	Yes	Yes
2-Digit Ind	No	No	No	No	Yes	No
3-Digit Ind	No	No	No	No	No	Yes

Note: Heteroskedasticity-consistent standard errors are in parentheses. * $p < 0.1$, ** $p < 0.05$, *** $p < 0.01$. Some observations are dropped in Columns (5) and (6) because some industry exists only in one prefecture, which results in multi-collinearity. The average application rate for the special term of the employment adjustment subsidy is 0.256.

Table 3: Effect of Credit Score on Application to and Receipt of Grants, Subsidies, or Loans

	(1)	(2)	(3)	(4)	(5)	(6)
Panel A						
Program Type	Employment Adjustment Subsidy	Business Continuity Grant	Office Rent Grant	Corporate Tax Moratorium	Property Tax Reduction	
Outcome						
Application	-0.289** (0.130)	-0.346*** (0.108)	-0.174* (0.090)	-0.434*** (0.059)	-0.093** (0.037)	
Receive	-0.174 (0.125)	-0.247** (0.108)	-0.071 (0.076)	-	-	
Panel B						
Loan Type	JFC Concessional	JFC Standard	Shoko Concessional	Shoko Standard	Bank Concessional	Bank Standard
Outcome						
Application	-0.803*** (0.113)	-0.254*** (0.062)	-0.419*** (0.073)	-0.144*** (0.042)	-0.961*** (0.132)	-0.322*** (0.088)
Receive	-0.583*** (0.108)	-0.171*** (0.055)	-0.339*** (0.066)	-0.081** (0.034)	-0.758*** (0.129)	-0.231*** (0.082)
ln (1 + Amt.)	-4.858*** (0.902)	-1.453*** (0.459)	-2.981*** (0.578)	-0.642** (0.294)	-6.219*** (1.071)	-1.721** (0.722)

Note: N=4199. OLS estimates are reported. Heteroskedasticity-consistent standard errors are in parentheses. All specifications include bin dummy variables with 0.1 interval between -1 and 1 of minimum of sales growth between February and September 2020, natural logarithm of sales in 2019, natural logarithm of the number of employees in 2019, sale growth prospect of 2021 relative to 2019, prefecture fixed effects, 2-digit industry fixed effects. The approvals of corporate tax moratorium and property tax reduction are not recorded in the survey. Panel C reports the regression results of borrowing amounts conditional on receipt of the loans. The numbers of observations are different from Table 1 since some observations are dropped because of multicollinearity with fixed effects.

Table 4: Cumulative Borrowing Amount of Concessional Loans

	Cases	Percentage	Cumulative Borrowing Amount	Percentage
TSR Credit Score				
<=49	780	19%	1,868,450	18%
Total	4,201	100%	10,200,000	100%

Note: The sum of concessional loans made by Japan Financial Corporation, Shoko Chukin and Private Banks.

Table 5: Effect of Profit per Employee on Application to and Receipt of Grants, Subsidies, or Loans

	(1)	(2)	(3)	(4)	(5)	(6)
Panel A						
Program Type	Employment Adjustment Subsidy	Business Continuity Grant	Office Rent Grant	Corporate Tax Moratorium	Property Tax Reduction	
Outcome						
Application	-0.015*** (0.006)	-0.011** (0.005)	-0.014*** (0.004)	-0.006** (0.002)	0.002 (0.002)	
Receive	-0.013** (0.005)	-0.010** (0.005)	-0.008** (0.003)	-	-	
Panel B						
Loan Type	JFC Concessional	JFC Standard	Shoko Concessional	Shoko Standard	Bank Concessional	Bank Standard
Outcome						
Application	-0.029*** (0.005)	-0.004* (0.003)	-0.018*** (0.003)	-0.007*** (0.002)	-0.043*** (0.006)	-0.009** (0.004)
Receive	-0.023*** (0.005)	-0.002 (0.002)	-0.012*** (0.003)	-0.004** (0.001)	-0.035*** (0.006)	-0.007* (0.004)
ln (1 + Amt.)	-0.195*** (0.039)	-0.018 (0.020)	-0.108*** (0.026)	-0.033** (0.013)	-0.296*** (0.047)	-0.056* (0.033)

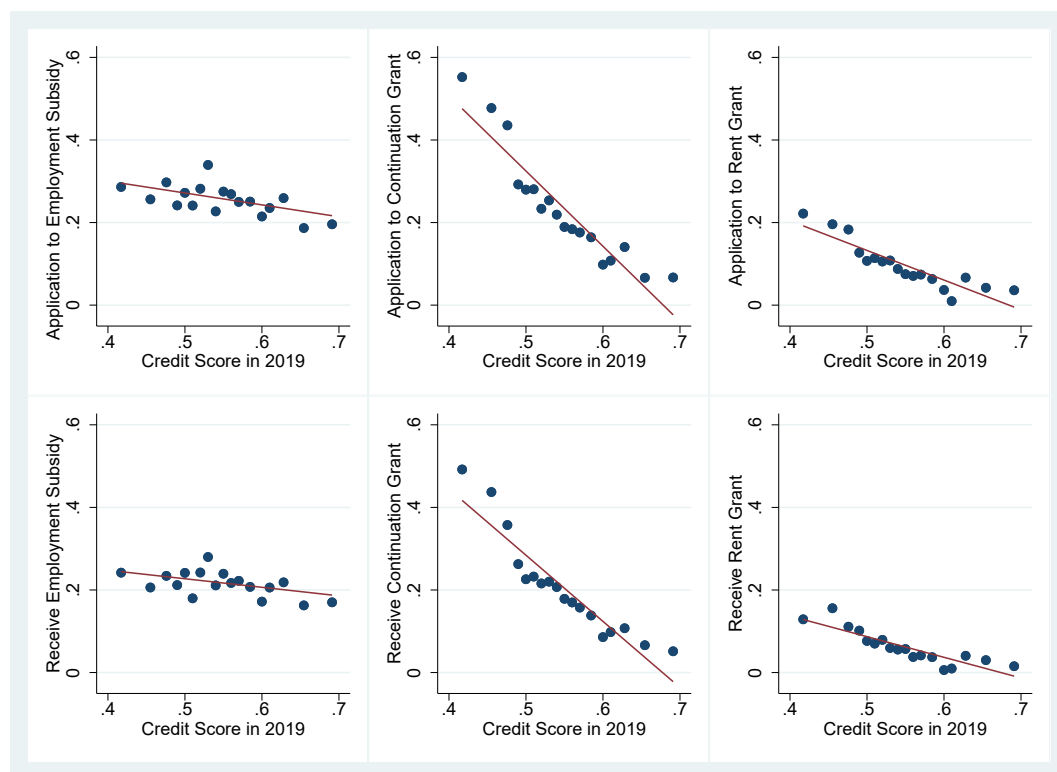
Note: N=3380. OLS estimates are reported. Heteroskedasticity-consistent standard errors are in parentheses. All specifications include bin dummy variables with 0.1 interval between -1 and 1 of minimum of sales growth between February and September 2020, natural logarithm of sales in 2019, natural logarithm of the number of employees in 2019, sale growth prospect of 2021 relative to 2019, prefecture fixed effects, 2-digit industry fixed effects. The approvals of corporate tax moratorium and property tax reduction are not recorded in the survey. The numbers of observations are different from Table 1 since some observations are dropped because of multicollinearity with fixed effects.

Table 6: Effect of Credit Score on Application to and Receipt of Grants, Subsidies, or Loans Among SMEs

	(1)	(2)	(3)	(4)	(5)	(6)
Panel A						
Program Type	Employment Adjustment Subsidy	Business Continuity Grant	Office Rent Grant	Corporate Tax Moratorium	Property Tax Reduction	
Outcome						
Application	-0.312** (0.136)	-0.355*** (0.116)	-0.219** (0.096)	-0.441*** (0.062)	-0.108*** (0.040)	
Receive	-0.198 (0.131)	-0.245** (0.116)	-0.081 (0.081)	-	-	
Panel B						
Loan Type	JFC Policy	JFC Other	Shoko Policy	Shoko Other	Bank Policy	Bank Other
Outcome						
Application	-0.836*** (0.122)	-0.264*** (0.067)	-0.472*** (0.078)	-0.165*** (0.044)	-1.055*** (0.143)	-0.344*** (0.093)
Receive	-0.608*** (0.117)	-0.186*** (0.060)	-0.383*** (0.071)	-0.095*** (0.035)	-0.835*** (0.140)	-0.245*** (0.087)
ln (1 + Amt.)	-5.065*** (0.978)	-1.587*** (0.497)	-3.377*** (0.622)	-0.764** (0.302)	-6.834*** (1.159)	-1.806** (0.759)

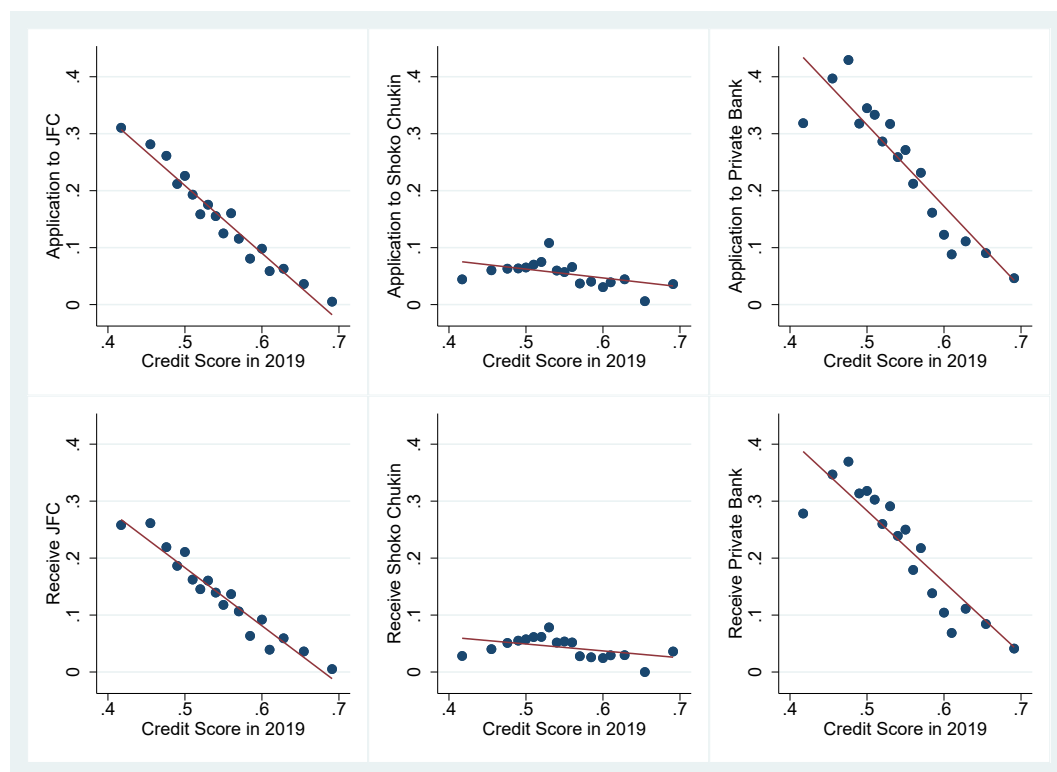
Note: N=3867. OLS estimates are reported. Heteroskedasticity-consistent standard errors are in parentheses. All specifications include bin dummy variables with 0.1 interval between -1 and 1 of minimum of sales growth between February and September 2020, natural logarithm of sales in 2019, natural logarithm of the number of employees in 2019, sale growth prospect of 2021 relative to 2019, prefecture fixed effects, 2-digit industry fixed effects. The approvals of corporate tax moratorium and property tax reduction are not recorded in the survey. The numbers of observations are different from Table 1 since some observations are dropped because of multicollinearity with fixed effects.

Figure 1: Credit Score in 2019 and Application and Receipt of Government Subsidies and Grants



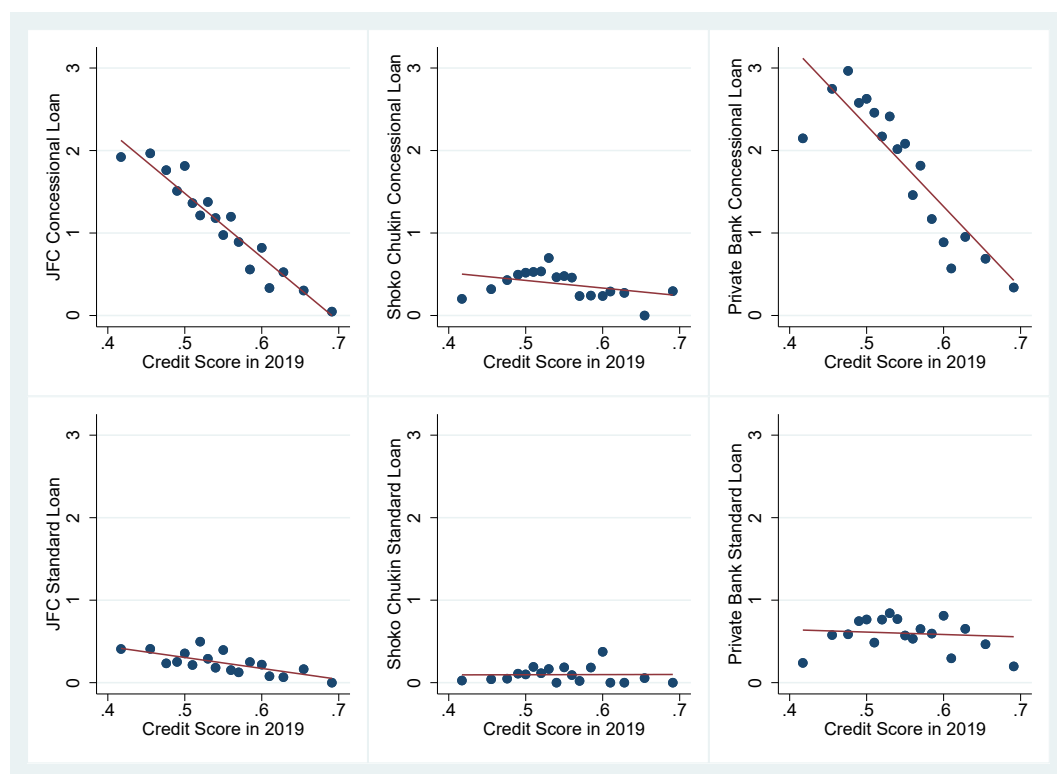
Note: Upper panels are for application to the subsidies and grants. Lower panels are for receipt of the subsidies and grants. The credit score is taken from the firm information file of TSR, as of December 2019. Application and receipt of the programs are taken from the TSR-CREPE firm survey. Each dot corresponds to the bin average of Y-axis. The straight line is the regression line estimated by OLS.

Figure 2: Credit Score in 2019 and Application and Receipt of Concessional Loans



Note: Upper panels are for application to the concessional loan programs. Lower panels are for receipt of the programs. The credit score is from the firm information file of TSR, as of December 2019. Application and receipt of the programs are from the TSR-CREPE firm survey. Each dot corresponds to the bin average of Y-axis. The straight line is the regression line estimated by OLS.

Figure 3: Credit Score in 2019 and ln(1+ Borrowing Amount) of Concessional and Standard Loans



Note: All figures include only firms that applied and were approved for loans. Dependent variables are $\ln(1 + \text{Borrowing Amount})$. Upper panels are for concessional loan programs. Lower panels are for standard loan programs. The credit score is from the firm information file of TSR, as of December 2019. The borrowing amount are from the TSR-CREPE firm survey. Each dot corresponds to the bin average of Y-axis. The straight line is the regression line estimated by OLS.

Web Appendix

Appendix A: Questionnaire of the TSR-CREPE Special Firm Survey on the Effects of and the Reactions to COVID-19

The purposes of this survey are to examine the impact of the COVID-19 outbreak on firm operations and come up with effective policies. Your responses will not be used for other purposes except statistical analysis. Please answer about the situation at your company truthfully.

Pre-COVID situation

The following questions ask about the situation in 2019 before the spread of COVID-19 in Japan. Please refer to the situation at your company when the business operates normally.

Did your company have a Work from Home policy?

No, my company did not have a Work from Home policy.

Yes, my company had a Work from Home policy.

For those who answered, “yes” in the previous question, approximately what percentage of your employees were using the Work from Home policy and working remotely? Please answer by including employees who worked remotely even for a short period. However, please do not include employees working overtime at home due to, for instance, unfinished work, who were not under the Work from Home policy.

() %

Did your company have a pre-determined Business Continuity Planning (BCP), in other words, any usual operations or emergency plans to minimize the loss of company assets, and ensure the continuity of the main operation or quick recovery in the event of a disaster, such as natural disasters, fire, terrorist attacks, etc.?

No, my company did not have a BCP.

Yes, my company had a BCP.

For those who answered “Yes, my company had a BCP” in the previous question, was your company’s BCP helpful during the outbreak of the COVID-19?

It was extremely helpful.

It was somewhat helpful.

It was not that helpful.

It was not helpful at all.

Forecast of the impact on sales and employment

How did the sales, number of employees (including part-time workers, contract workers, temporary agency workers), hours worked (overtime included) per employee of your company change in 2020? Please answer by comparing the numbers to those of the **same month in 2019**. For example, if there was no change, please answer “0”, 15 percent increase, “15”, 15 percent decrease, “-15”.

	February	March	April	May	June	July	August	September
Sales								
Number of employees								
Average hours worked per person								

How do you think the sales of your company in 2021 (next year) are going to change compared to that of 2019 (last year)? If you think there will be no change, please answer “0”, 15 percent increase, “15”, and 15 percent decrease, “-15”.

() %

Questions about firm operations under the Declaration of a State of Emergency

Between April 16th and May 25th, 2020, Japan had declared a State of Emergency for the whole country. Please answer the following questions by comparing the situation during the State of Emergency to that of January 2020, which was before the outbreak of the COVID-19.

What was your company’s response to the work style of the employees during the Declaration of a State of Emergency? Please select all that apply.

My company made employees come to work as before.

My company let employees work remotely. Compared to the period before COVID-19, () percent of the employees came to the workplace.

My company made employees take a temporary leave. My company made () percent of the employees take a temporary leave.

My company dismissed employees. () percent of the employees were dismissed.

Questions about the current work from home policy

The following questions ask about the present work style of the employees as of October 26, 2020. Please select all that apply. Please answer the questions by comparing the present situation with that in January 2020, which was before the outbreak of the COVID-19.

My company makes employees continue coming to work as before.

My company lets employees work remotely. Compared to before COVID, () percent of workers come to the workplace.

My company makes employees take a temporary leave. () percent of the employees are now taking a temporary leave.

My company has dismissed employees. () percent of the employees have been dismissed.

Application and reception of assistance from the central and local governments

The central and local governments have been conducting several programs to aid the economic loss from the outbreak of COVID-19. Please select all of the programs that your company has applied for.

	Application (Yes/No)	Month of application (if applied)	Month of decision(if applied)	Amount of money (Ten thousand yen) (If rejected, please answer "0".)
Employment adjustment subsidy				
Subsidy program for Sustaining Businesses				
Rent Support Funds				
Tax deferral/extension of payment deadline				—
Reduction or exemption of property tax etc.				—

Application and reception of assistance from financial institutions

The following questions ask about aid from financial institutions. Please select all of the aids your company has applied for.

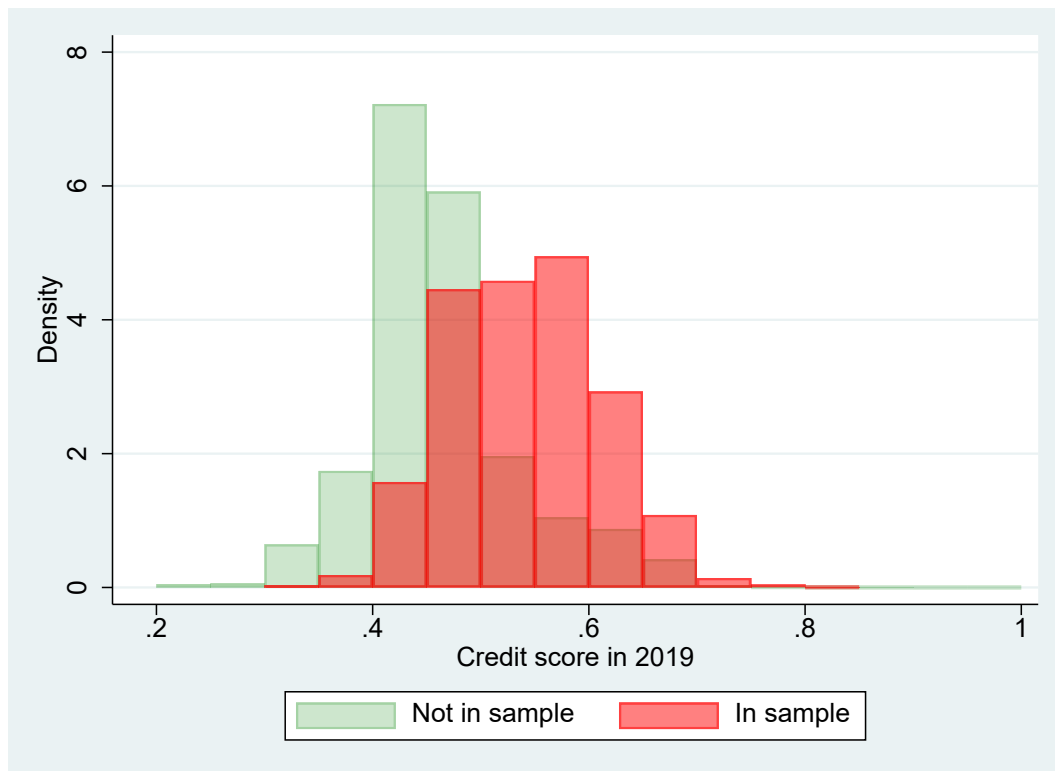
	Application (Yes/No)	Month of application (If applied)	Month of decision (If applied)	Amount of money (ten thousand yen) (If rejected, please answer “0”.)
Zero-interest, collateral-free loan from the Japan Finance Corporation (Special Loan for COVID-19)				
Other loans from Japan Finance Corporation				
Zero-interest, collateral-free loan from the Shoko Chukin Bank (Disaster Recovery Loan)				
Other loans from the Shoko Chukin Bank				
Zero-interest, collateral -free loan from private financial institutions (with credit guarantee)				
Other loans from private financial institutions				

Appendix B: Characteristics of Survey Respondents Relative to the Firm's Population in the TSR Database

Appendix Table B1: Descriptive Statistics

	Population	In sample
Credit Score (Bad 0.0 – Good 1.0)	0.478 (0.0758)	0.548 (0.0668)
Profit / Worker and Month (1,000 JPY)	50.23 (201.6)	103.7 (215.5)
Number of Employees	25.26 (420.3)	173.1 (2769.9)
SMEs	0.983 (0.127)	0.910 (0.286)
Industry		
Agriculture, Forestry and Fishery	1.14	0.33
Mining	0.11	0.11
Construction	18.36	11.49
Manufacturing	10.82	29.61
Public Utility	0.34	0.27
Information	4.37	6.41
Transportation	2.24	4.70
Wholesale and Retail	21.23	26.20
Finance	1.80	0.98
Real Estate and Lease	8.52	3.41
Professional Services	7.83	5.85
Hotel and Restaurant	5.53	1.14
Life Services	2.93	1.54
Education	0.78	0.56
Health and Welfare	5.34	1.07
Postal Service and Cooperatives	8.33	6.34
Other Services	0.22	0.00
Public Sector	0.13	0.00
Total	100.00	100.00
N		

Appendix Figure B1: Distribution of Credit Score



Source: TSR data base as of December 2019 and TSR-CREPE special survey took place between October 26th and November 6th in 2020.

Note: The original credit score is divided by 100 in order to calculate the credit score above.

Appendix C: Detailed Regression Results of Program/Loan Applications

Table C1: Application to Business Continuity Grant

	(1)	(2)	(3)	(4)	(5)	(6)
Credit Score	-1.822*** (0.095)	-0.589*** (0.110)	-0.365*** (0.101)	-0.454*** (0.105)	-0.346*** (0.108)	-0.306*** (0.112)
Ln (Sales 19)		-0.018*** (0.006)	-0.009 (0.006)	-0.007 (0.006)	-0.012 (0.007)	-0.013* (0.008)
Ln (Emp 2019)		-0.033*** (0.007)	-0.031*** (0.007)	-0.031*** (0.007)	-0.032*** (0.008)	-0.032*** (0.009)
Prospect		-0.008 (0.030)	-0.049* (0.027)	-0.045* (0.027)	-0.040 (0.028)	-0.034 (0.029)
Min (YoY S G)		-0.563*** (0.022)				
<i>N</i>	4201	4201	4201	4201	4199	4151
Bin Min Sales	No	No	Yes	Yes	Yes	Yes
Prefecture	No	No	No	Yes	Yes	Yes
2-Digit Ind	No	No	No	No	Yes	No
3-Digit Ind	No	No	No	No	No	Yes

Table C2: Application to Office Rent Grant

	(1)	(2)	(3)	(4)	(5)	(6)
Credit Score	-0.718*** (0.069)	-0.397*** (0.085)	-0.324*** (0.084)	-0.270*** (0.087)	-0.174* (0.090)	-0.171* (0.093)
Ln (Sales 19)		0.004 (0.005)	0.008 (0.005)	0.004 (0.005)	-0.002 (0.006)	-0.003 (0.006)
Ln (Emp 2019)		-0.009 (0.006)	-0.009* (0.005)	-0.007 (0.005)	-0.004 (0.007)	-0.005 (0.007)
Prospect		-0.029 (0.023)	-0.042* (0.023)	-0.047** (0.023)	-0.044* (0.023)	-0.041* (0.024)
Min (YoY S G)		-0.282*** (0.017)				
<i>N</i>	4201	4201	4201	4201	4199	4151
Bin Min Sales	No	No	Yes	Yes	Yes	Yes
Prefecture	No	No	No	Yes	Yes	Yes
2-Digit Ind	No	No	No	No	Yes	No
3-Digit Ind	No	No	No	No	No	Yes

Table C3: Application to Corporate Tax Moratorium

	(1)	(2)	(3)	(4)	(5)	(6)
Credit Score	-0.443*** (0.043)	-0.462*** (0.055)	-0.440*** (0.055)	-0.452*** (0.058)	-0.434*** (0.059)	-0.409*** (0.061)
Ln (Sales 19)		-0.005 (0.003)	-0.003 (0.003)	-0.003 (0.003)	-0.004 (0.004)	-0.007 (0.004)
Ln (Emp 2019)		0.015*** (0.004)	0.015*** (0.004)	0.015*** (0.004)	0.016*** (0.004)	0.017*** (0.005)
Prospect		-0.043*** (0.015)	-0.046*** (0.015)	-0.046*** (0.015)	-0.044*** (0.015)	-0.046*** (0.016)
Min (YoY S G)		-0.083*** (0.011)				
<i>N</i>	4201	4201	4201	4201	4199	4151
Bin Min Sales	No	No	Yes	Yes	Yes	Yes
Prefecture	No	No	No	Yes	Yes	Yes
2-Digit Ind	No	No	No	No	Yes	No
3-Digit Ind	No	No	No	No	No	Yes

Table C4: Application to Property Tax Reduction

	(1)	(2)	(3)	(4)	(5)	(6)
Credit Score	-0.078*** (0.027)	-0.105*** (0.035)	-0.091*** (0.035)	-0.111*** (0.036)	-0.093** (0.037)	-0.086** (0.039)
Ln (Sales 19)		0.001 (0.002)	0.002 (0.002)	0.003 (0.002)	0.004 (0.002)	0.003 (0.003)
Ln (Emp 2019)		0.004* (0.002)	0.004* (0.002)	0.003 (0.002)	0.001 (0.003)	0.000 (0.003)
Prospect		0.006 (0.009)	0.006 (0.010)	0.007 (0.010)	0.012 (0.010)	0.013 (0.010)
Min (YoY S G)		-0.047*** (0.007)				
<i>N</i>	4201	4201	4201	4201	4199	4151
Bin Min Sales	No	No	Yes	Yes	Yes	Yes
Prefecture	No	No	No	Yes	Yes	Yes
2-Digit Ind	No	No	No	No	Yes	No
3-Digit Ind	No	No	No	No	No	Yes

Table C5: Application to Concessional Loan of Japan Financial Corporation

	(1)	(2)	(3)	(4)	(5)	(6)
Credit Score	-1.187*** (0.082)	-0.892*** (0.105)	-0.843*** (0.104)	-0.934*** (0.109)	-0.803*** (0.113)	-0.805*** (0.116)
Ln (Sales 19)		-0.006 (0.006)	-0.006 (0.006)	-0.002 (0.006)	-0.007 (0.008)	-0.006 (0.008)
Ln (Emp 2019)		-0.002 (0.007)	-0.001 (0.007)	-0.001 (0.007)	-0.005 (0.008)	-0.005 (0.009)
Prospect		0.027 (0.028)	0.026 (0.028)	0.028 (0.029)	0.032 (0.029)	0.047 (0.029)
Min (YoY S G)		-0.189*** (0.020)				
<i>N</i>	4201	4201	4201	4201	4199	4151
Bin Min Sales	No	No	Yes	Yes	Yes	Yes
Prefecture	No	No	No	Yes	Yes	Yes
2-Digit Ind	No	No	No	No	Yes	No
3-Digit Ind	No	No	No	No	No	Yes

Table C6: Application to Standard Loan of Japan Financial Corporation

	(1)	(2)	(3)	(4)	(5)	(6)
Credit Score	-0.247*** (0.044)	-0.275*** (0.057)	-0.273*** (0.057)	-0.294*** (0.059)	-0.254*** (0.062)	-0.255*** (0.064)
Ln (Sales 19)		-0.001 (0.003)	-0.000 (0.003)	-0.000 (0.003)	-0.003 (0.004)	-0.002 (0.004)
Ln (Emp 2019)		0.005 (0.004)	0.005 (0.004)	0.006 (0.004)	0.007 (0.005)	0.006 (0.005)
Prospect		-0.025 (0.015)	-0.026* (0.016)	-0.023 (0.016)	-0.025 (0.016)	-0.033** (0.016)
Min (YoY S G)		-0.018 (0.011)				
<i>N</i>	4201	4201	4201	4201	4199	4151
Bin Min Sales	No	No	Yes	Yes	Yes	Yes
Prefecture	No	No	No	Yes	Yes	Yes
2-Digit Ind	No	No	No	No	Yes	No
3-Digit Ind	No	No	No	No	No	Yes

Table C7: Application to Concessional Loan of Shoko Chukin

	(1)	(2)	(3)	(4)	(5)	(6)
Credit Score	-0.155*** (0.053)	-0.443*** (0.067)	-0.414*** (0.067)	-0.466*** (0.070)	-0.419*** (0.073)	-0.417*** (0.075)
Ln (Sales 19)		0.019*** (0.004)	0.019*** (0.004)	0.020*** (0.004)	0.011** (0.005)	0.012** (0.005)
Ln (Emp 2019)		0.005 (0.004)	0.005 (0.004)	0.005 (0.004)	0.011** (0.005)	0.010* (0.006)
Prospect		-0.012 (0.018)	-0.011 (0.018)	-0.010 (0.018)	-0.011 (0.019)	-0.007 (0.019)
Min (YoY S G)		-0.071*** (0.013)				
<i>N</i>	4201	4201	4201	4201	4199	4151
Bin Min Sales	No	No	Yes	Yes	Yes	Yes
Prefecture	No	No	No	Yes	Yes	Yes
2-Digit Ind	No	No	No	No	Yes	No
3-Digit Ind	No	No	No	No	No	Yes

Table C8: Application to Standard Loan of Shoko Chukin

	(1)	(2)	(3)	(4)	(5)	(6)
Credit Score	-0.037 (0.030)	-0.160*** (0.039)	-0.159*** (0.039)	-0.171*** (0.041)	-0.144*** (0.042)	-0.166*** (0.043)
Ln (Sales 19)		0.005** (0.002)	0.005** (0.002)	0.005** (0.002)	0.001 (0.003)	0.003 (0.003)
Ln (Emp 2019)		0.005* (0.003)	0.005* (0.003)	0.004* (0.003)	0.008** (0.003)	0.005* (0.003)
Prospect		0.005 (0.011)	0.005 (0.011)	0.005 (0.011)	0.006 (0.011)	0.008 (0.011)
Min (YoY S G)		-0.014* (0.008)				
<i>N</i>	4201	4201	4201	4201	4199	4151
Bin Min Sales	No	No	Yes	Yes	Yes	Yes
Prefecture	No	No	No	Yes	Yes	Yes
2-Digit Ind	No	No	No	No	Yes	No
3-Digit Ind	No	No	No	No	No	Yes

Table C9: Application to Concessional Loan of Private Banks

	(1)	(2)	(3)	(4)	(5)	(6)
Credit Score	-1.429*** (0.098)	-1.020*** (0.125)	-0.944*** (0.123)	-1.086*** (0.128)	-0.961*** (0.132)	-0.913*** (0.137)
Ln (Sales 19)		-0.006 (0.007)	-0.009 (0.007)	-0.000 (0.007)	-0.011 (0.009)	-0.017* (0.009)
Ln (Emp 2019)		-0.010 (0.008)	-0.007 (0.008)	-0.010 (0.008)	-0.004 (0.010)	0.002 (0.010)
Prospect		-0.067** (0.034)	-0.061* (0.034)	-0.053 (0.033)	-0.039 (0.034)	-0.052 (0.035)
Min (YoY S G)		-0.179*** (0.024)				
<i>N</i>	4201	4201	4201	4201	4199	4151
Bin Min Sales	No	No	Yes	Yes	Yes	Yes
Prefecture	No	No	No	Yes	Yes	Yes
2-Digit Ind	No	No	No	No	Yes	No
3-Digit Ind	No	No	No	No	No	Yes

Table C10: Application to Standard Loan of Private Banks

	(1)	(2)	(3)	(4)	(5)	(6)
Credit Score	-0.082 (0.063)	-0.343*** (0.082)	-0.320*** (0.082)	-0.332*** (0.085)	-0.322*** (0.088)	-0.263*** (0.091)
Ln (Sales 19)		0.015*** (0.005)	0.016*** (0.005)	0.016*** (0.005)	0.013** (0.006)	0.011* (0.006)
Ln (Emp 2019)		0.005 (0.005)	0.005 (0.005)	0.005 (0.005)	0.010 (0.007)	0.009 (0.007)
Prospect		0.001 (0.022)	0.004 (0.022)	0.002 (0.022)	-0.006 (0.023)	-0.011 (0.023)
Min (YoY S G)		-0.048*** (0.016)				
<i>N</i>	4201	4201	4201	4201	4199	4151
Bin Min Sales	No	No	Yes	Yes	Yes	Yes
Prefecture	No	No	No	Yes	Yes	Yes
2-Digit Ind	No	No	No	No	Yes	No
3-Digit Ind	No	No	No	No	No	Yes

Appendix D: Detailed Regression Results of Program/Loan Receipt

Table D1: Receipt of Employment Adjustment Subsidy

	(1)	(2)	(3)	(4)	(5)	(6)
Credit Score	-0.207** (0.095)	-0.357*** (0.120)	-0.273** (0.118)	-0.329*** (0.122)	-0.174 (0.125)	-0.157 (0.128)
Ln (Sales 19)		-0.017** (0.007)	-0.018*** (0.007)	-0.018*** (0.007)	-0.019** (0.008)	-0.022** (0.009)
Ln (Emp 2019)		0.057*** (0.008)	0.059*** (0.008)	0.058*** (0.008)	0.047*** (0.009)	0.049*** (0.010)
Prospect		-0.118*** (0.032)	-0.114*** (0.032)	-0.114*** (0.032)	-0.093*** (0.032)	-0.071** (0.033)
Min (YoY S G)		-0.231*** (0.023)				
<i>N</i>	4201	4201	4201	4201	4199	4151
Bin Min Sales	No	No	Yes	Yes	Yes	Yes
Prefecture	No	No	No	Yes	Yes	Yes
2-Digit Ind	No	No	No	No	Yes	No
3-Digit Ind	No	No	No	No	No	Yes

Table D2: Receipt of Business Continuity Grant

	(1)	(2)	(3)	(4)	(5)	(6)
Credit Score	-1.602*** (0.091)	-0.468*** (0.108)	-0.267*** (0.100)	-0.332*** (0.104)	-0.247** (0.108)	-0.191* (0.112)
Ln (Sales 19)		-0.023*** (0.006)	-0.015*** (0.006)	-0.013** (0.006)	-0.016** (0.007)	-0.016** (0.008)
Ln (Emp 2019)		-0.024*** (0.007)	-0.021*** (0.007)	-0.021*** (0.007)	-0.025*** (0.008)	-0.026*** (0.008)
Prospect		-0.024 (0.029)	-0.063** (0.027)	-0.058** (0.027)	-0.057** (0.028)	-0.049* (0.028)
Min (YoY S G)		-0.488*** (0.021)				
<i>N</i>	4201	4201	4201	4201	4199	4151
Bin Min Sales	No	No	Yes	Yes	Yes	Yes
Prefecture	No	No	No	Yes	Yes	Yes
2-Digit Ind	No	No	No	No	Yes	No
3-Digit Ind	No	No	No	No	No	Yes

Table D3: Receipt of Office Rent Grant

	(1)	(2)	(3)	(4)	(5)	(6)
Credit Score	-0.500*** (0.056)	-0.237*** (0.071)	-0.191*** (0.070)	-0.122* (0.073)	-0.071 (0.076)	-0.073 (0.078)
Ln (Sales 19)		0.000 (0.004)	0.003 (0.004)	-0.001 (0.004)	-0.002 (0.005)	-0.002 (0.005)
Ln (Emp 2019)		-0.007 (0.005)	-0.007 (0.005)	-0.006 (0.005)	-0.005 (0.006)	-0.005 (0.006)
Prospect		-0.013 (0.019)	-0.021 (0.019)	-0.024 (0.019)	-0.026 (0.019)	-0.027 (0.020)
Min (YoY S G)		-0.185*** (0.014)				
<i>N</i>	4201	4201	4201	4201	4199	4151
Bin Min Sales	No	No	Yes	Yes	Yes	Yes
Prefecture	No	No	No	Yes	Yes	Yes
2-Digit Ind	No	No	No	No	Yes	No
3-Digit Ind	No	No	No	No	No	Yes

Table D4: Receipt of Concessional Loan of Japan Financial Corporation

	(1)	(2)	(3)	(4)	(5)	(6)
Credit Score	-1.019*** (0.078)	-0.663*** (0.100)	-0.629*** (0.100)	-0.701*** (0.104)	-0.583*** (0.108)	-0.585*** (0.111)
Ln (Sales 19)		-0.010* (0.006)	-0.010* (0.006)	-0.008 (0.006)	-0.009 (0.007)	-0.007 (0.007)
Ln (Emp 2019)		-0.004 (0.007)	-0.003 (0.007)	-0.003 (0.007)	-0.010 (0.008)	-0.012 (0.008)
Prospect		0.051* (0.027)	0.052* (0.027)	0.055** (0.027)	0.061** (0.028)	0.078*** (0.028)
Min (YoY S G)		-0.161*** (0.020)				
<i>N</i>	4201	4201	4201	4201	4199	4151
Bin Min Sales	No	No	Yes	Yes	Yes	Yes
Prefecture	No	No	No	Yes	Yes	Yes
2-Digit Ind	No	No	No	No	Yes	No
3-Digit Ind	No	No	No	No	No	Yes

Table D5: Receipt of Standard Loan of Japan Financial Corporation

	(1)	(2)	(3)	(4)	(5)	(6)
Credit Score	-0.176*** (0.039)	-0.170*** (0.051)	-0.174*** (0.051)	-0.196*** (0.053)	-0.171*** (0.055)	-0.167*** (0.057)
Ln (Sales 19)		-0.002 (0.003)	-0.002 (0.003)	-0.003 (0.003)	-0.002 (0.004)	-0.003 (0.004)
Ln (Emp 2019)		0.004 (0.003)	0.004 (0.003)	0.005 (0.003)	0.004 (0.004)	0.004 (0.004)
Prospect		-0.019 (0.014)	-0.019 (0.014)	-0.018 (0.014)	-0.017 (0.014)	-0.022 (0.014)
Min (YoY S G)		-0.012 (0.010)				
<i>N</i>	4201	4201	4201	4201	4199	4151
Bin Min Sales	No	No	Yes	Yes	Yes	Yes
Prefecture	No	No	No	Yes	Yes	Yes
2-Digit Ind	No	No	No	No	Yes	No
3-Digit Ind	No	No	No	No	No	Yes

Table D6: Receipt of Concessional Loan of Shoko Chukin

	(1)	(2)	(3)	(4)	(5)	(6)
Credit Score	-0.121** (0.047)	-0.336*** (0.060)	-0.321*** (0.061)	-0.353*** (0.063)	-0.339*** (0.066)	-0.330*** (0.068)
Ln (Sales 19)		0.014*** (0.004)	0.013*** (0.004)	0.014*** (0.004)	0.008* (0.004)	0.009** (0.005)
Ln (Emp 2019)		0.004 (0.004)	0.004 (0.004)	0.004 (0.004)	0.009* (0.005)	0.008 (0.005)
Prospect		0.007 (0.016)	0.007 (0.016)	0.007 (0.017)	0.008 (0.017)	0.012 (0.017)
Min (YoY S G)		-0.056*** (0.012)				
<i>N</i>	4201	4201	4201	4201	4199	4151
Bin Min Sales	No	No	Yes	Yes	Yes	Yes
Prefecture	No	No	No	Yes	Yes	Yes
2-Digit Ind	No	No	No	No	Yes	No
3-Digit Ind	No	No	No	No	No	Yes

Table D7: Receipt of Standard Loan of Shoko Chukin

	(1)	(2)	(3)	(4)	(5)	(6)
Credit Score	-0.001 (0.024)	-0.099*** (0.031)	-0.098*** (0.031)	-0.099*** (0.033)	-0.081** (0.034)	-0.084** (0.035)
Ln (Sales 19)		0.003* (0.002)	0.003* (0.002)	0.003* (0.002)	-0.000 (0.002)	0.001 (0.002)
Ln (Emp 2019)		0.004** (0.002)	0.004** (0.002)	0.004* (0.002)	0.007*** (0.003)	0.006** (0.003)
Prospect		0.004 (0.008)	0.003 (0.009)	0.002 (0.009)	0.003 (0.009)	0.004 (0.009)
Min (YoY S G)		-0.005 (0.006)				
<i>N</i>	4201	4201	4201	4201	4199	4151
Bin Min Sales	No	No	Yes	Yes	Yes	Yes
Prefecture	No	No	No	Yes	Yes	Yes
2-Digit Ind	No	No	No	No	Yes	No
3-Digit Ind	No	No	No	No	No	Yes

Table D8: Receipt of Concessional Loan of Private Banks

	(1)	(2)	(3)	(4)	(5)	(6)
Credit Score	-1.254*** (0.095)	-0.832*** (0.121)	-0.765*** (0.120)	-0.884*** (0.124)	-0.758*** (0.129)	-0.685*** (0.134)
Ln (Sales 19)		-0.007 (0.007)	-0.010 (0.007)	-0.003 (0.007)	-0.012 (0.009)	-0.018** (0.009)
Ln (Emp 2019)		-0.013 (0.008)	-0.009 (0.008)	-0.011 (0.008)	-0.010 (0.010)	-0.004 (0.010)
Prospect		-0.042 (0.033)	-0.037 (0.033)	-0.029 (0.033)	-0.017 (0.033)	-0.025 (0.034)
Min (YoY S G)		-0.148*** (0.024)				
<i>N</i>	4201	4201	4201	4201	4199	4151
Bin Min Sales	No	No	Yes	Yes	Yes	Yes
Prefecture	No	No	No	Yes	Yes	Yes
2-Digit Ind	No	No	No	No	Yes	No
3-Digit Ind	No	No	No	No	No	Yes

Table D9: Receipt of Standard Loan of Private Banks

	(1)	(2)	(3)	(4)	(5)	(6)
Credit Score	-0.085 (0.058)	-0.264*** (0.075)	-0.245*** (0.075)	-0.252*** (0.078)	-0.231*** (0.082)	-0.159* (0.084)
Ln (Sales 19)		0.009** (0.004)	0.009** (0.004)	0.010** (0.004)	0.008 (0.005)	0.003 (0.006)
Ln (Emp 2019)		0.005 (0.005)	0.005 (0.005)	0.006 (0.005)	0.008 (0.006)	0.010 (0.006)
Prospect		-0.001 (0.020)	0.002 (0.020)	0.001 (0.021)	-0.004 (0.021)	-0.003 (0.021)
Min (YoY S G)		-0.024 (0.015)				
<i>N</i>	4201	4201	4201	4201	4199	4151
Bin Min Sales	No	No	Yes	Yes	Yes	Yes
Prefecture	No	No	No	Yes	Yes	Yes
2-Digit Ind	No	No	No	No	Yes	No
3-Digit Ind	No	No	No	No	No	Yes